



Contact Us



WWW.EVSOON.COM
+86 0755-83999416
+86 0755-83999418
+86 0755-83998325

地址：中国·广东省深圳市龙华新区
观澜街道大和村鑫潮工业园4楼A区
Address:Area A, 4th Floor, Xinchao
Industrial Park, Dahe Village, Guanlan
Street, Longhua New District, Shenzhen
City, Guangdong Province, China

EVSOON INDUSTRY
中国·跃顺
工业

诚信为先 创新作源
INTEGRITY FIRST
INNOVATION AS SOURCE



跃顺工业设备，
科技引领,携手创新,共建和谐，
中国智造！

科技缔造生活 · 创新成就未来

Science and Technology Create Life · Innovation Achieves the Future

Evoon

写在前面 meet-cute

感谢您多年以来对我们跃顺的关注与支持!

回首过去发展历程, 您是我们尊敬的客户, 给予了我们无比的力量与信心, 在您的大力关心与支持下, 以及公司全体员工的勤奋努力下, 我们凭借优质的服务, 良好的信誉, 取得了一个又一个的辉煌成绩。

饮水思源, 我们深知, 跃顺所取得的每一点进步和成功, 都离不开您们的关注、信任、支持和参与。您们的理解和信任是我们进步的强大动力, 您们的关心和支持是我们成长的不竭源泉。您们的每次参与、每一个建议, 都让我们激动不已, 促使我们不断奋进。有了您们, 我们前进的征途才有源源不绝的信心和力量; 有了您们, 我们的事业才能长盛不衰地兴旺和发展。

跃顺工业, 服务全球一流企业! 在今后的岁月里, 我们将一如既往地给您提供优质服务, 真正实现双方互利互惠的双赢目的。我们非常珍惜与您建立起来的长期友好的合作关系, 并期望继续得到您的大力支持!

Thank you for your attention and support to us at EVSOON for many years!

Looking back at the past development course, you are our respectful customers, giving us incomparable strength and confidence. With your great care and support, and the diligent efforts of all the staff of our company, we have made one brilliant achievement after another with our high quality service and good reputation.

We know that every bit of progress and success made by EVSOON is inseparable from your attention, trust, support and participation. Your understanding and trust are the powerful driving force of our progress, and your care and support are the inexhaustible source of our growth. Each time you participate, each suggestion, we are excited, prompting us to keep moving forward. With you, our journey will have endless confidence and strength; with you, our business will flourish and develop.

EVSOON Industry, serving the global first-class enterprises! In the years to come, we will, as always, provide you with high quality services and truly realize the win-win purpose of mutual benefit. We cherish the long term friendly relationship we have established with you and look forward to continue to receive your strong support!

Mr Wang
CEO of Evsoon

深圳市跃顺工业设备有限公司成立于 2005 年，坐落于深圳观澜高新区，是一家智能螺丝供料系统、智能锁付单元和智能定位力臂数据采集及周边配套产品的研发、生产、销售于一体的专业性高新技术企业。

作为专注于研发螺丝供料拧紧技术的跃顺 (evsoon) 以自主研发与科技创新为基础，现已成功将螺丝供料系统走向数字化、智能化与集成化。

公司拥有一批从事开发生产科研技术人才和专业的管理团队，始终以客户为中心，市场需求为导向，努力为客户解决生产效率低、合格率低、资源浪费等问题，创造出更高的市场价值和效益。跃顺 (evsoon) 本着不断创新螺丝供料技术，来满足广大客户的生产新需求，努力回报广大客户的支持，促进中国制造迈向循环经济，高精度化的国际化新水平，为中国早日实现工业 4.0 智能化而努力奋斗！

Shenzhen Evsoon Industrial Equipment Co., Ltd. was established in 2005, located in Guanlan Hi-Tech Zone, Shenzhen, is an intelligent screw feeding system, intelligent locking unit and intelligent positioning force arm data acquisition and peripheral ancillary products in the research and development, production, sales in one of the professional high-tech enterprises.

As a focus on research and development of screw feeding and tightening technology, evsoon has successfully developed the screw feeding system to digitalization, intelligence and integration based on independent research and development and scientific and technological innovation.

The company has a number of scientific research and technical personnel engaged in the development and production and professional management team, always customer-centered, market demand-oriented, and strive to solve the problems of low production efficiency, low qualification rate, waste of resources, to create a higher market value and benefits. Evsoon (evsoon) with continuous innovation of screw feeding technology to meet the new needs of the majority of customers to meet the production of new needs, and strive to return the majority of customer support, to promote China's manufacturing towards a circular economy, high precision internationalization of a new level, and strive for China's early realization of the Industry 4.0 intelligent automation!

公司环境



公司简介

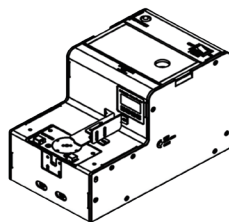
跃顺人 · 自己的历史

主营产品

Main products



供料机、锁付模组、悬臂支撑架
feeder、Locking Module、cantilever support frame



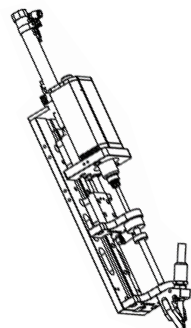
送钉机

Feeder

01 . 机用型mechanized

02 . 手用型hand-held

03 . 点数型counting type



锁付模组

Locking Module

01 . 吹、吸锁付组件 blow and suction locking assembly

02 . 拧紧枪screwdriver



悬臂支撑架

Cantilever support frame

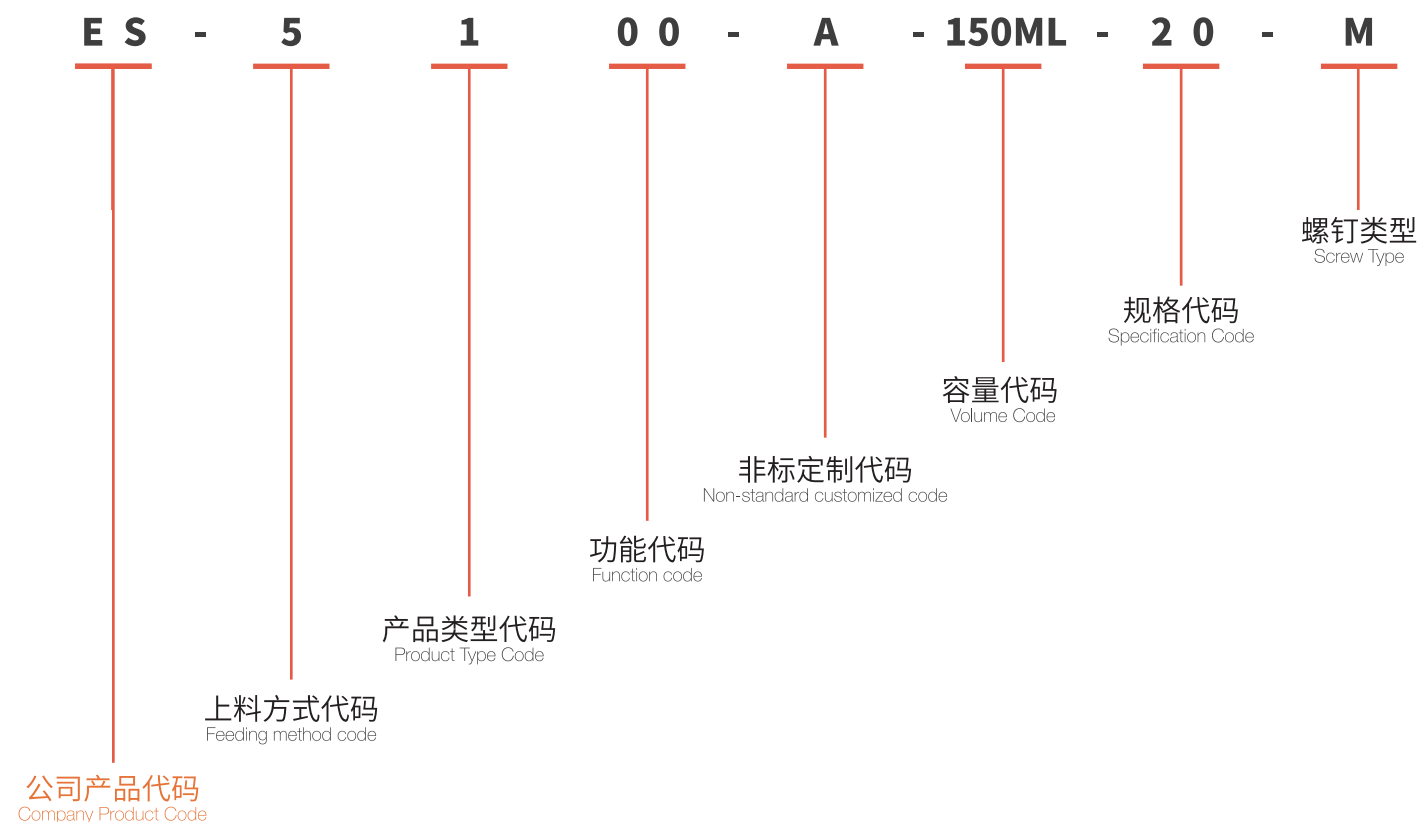
01 . 普通型normal type

02 . 高配型high model

产品选型定义

Product Selection Definition

ES-5100-A-150ML-20-H

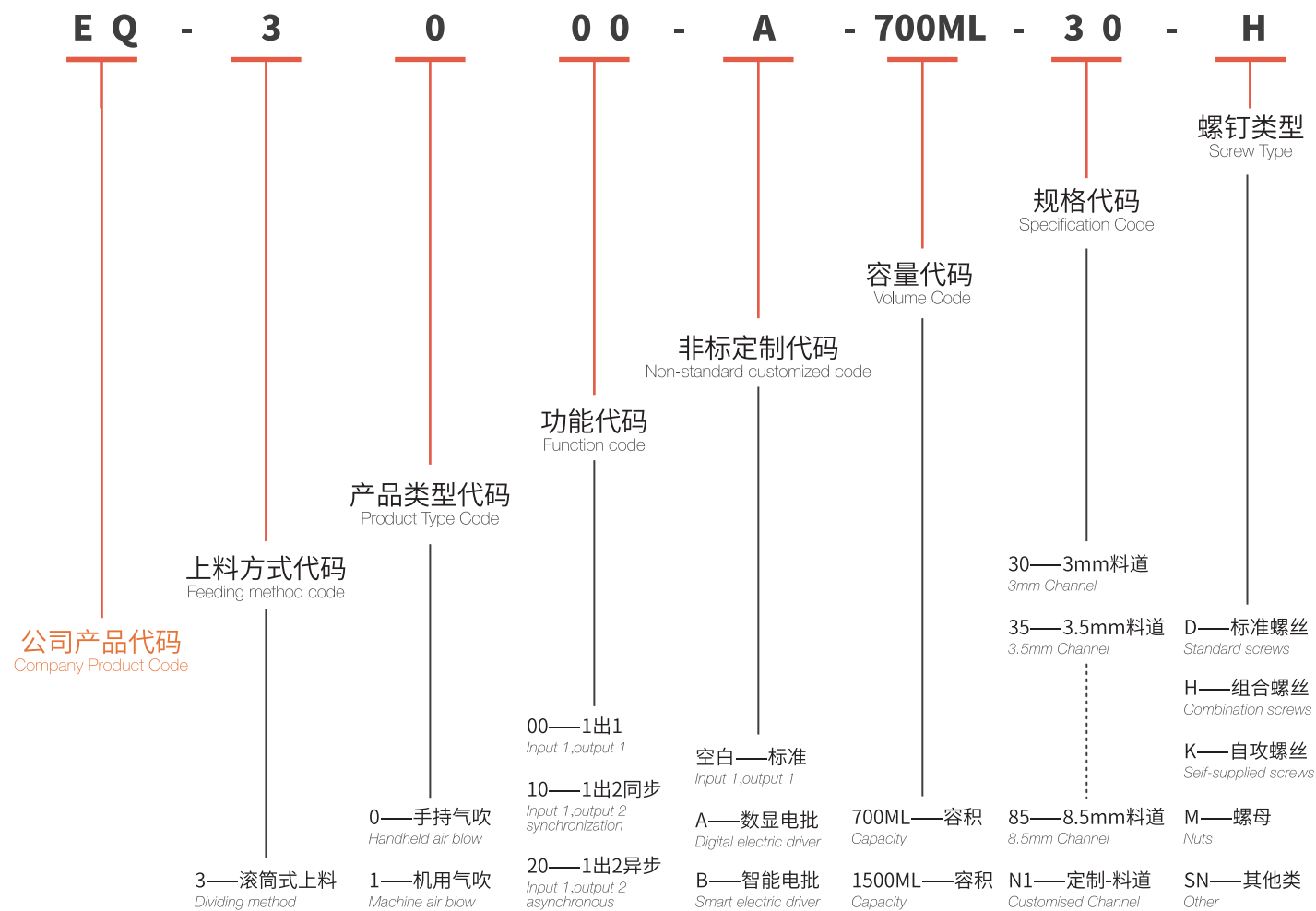


送钉机 (3系)

Feeder(3 Series)

产品型号说明

Product Model Description



产品类型

Product Type



EQ-3000

手持式气吹螺丝机 Handheld Air Blow Screw Machine

产品说明

Product Description

- 1.全自动供料/Fully automatic feeding

全自动送料系统，将螺丝吹送至批头，直接锁附产品，操作简单，效率高。
Fully automatic feeding system, blowing and feeding screws to the batch head, directly locking and attaching products, easy to operate and high efficiency.
- 2.横拉式分料/Cross-draw type dividing material

螺丝分料通过气缸横拉分料，分料稳定，不卡料，分料速度快。
The screw dividing material is divided by cylinder cross-pull, which is stable, no jamming and fast.
- 3.运转流畅/Smooth running

螺丝在滚筒内运转，未按正常方向进入轨道的螺丝，都会掉到滚筒内，进入下个循环，无卡料现象。
The screws run inside the drum, and any screws that do not enter the track in the normal direction will fall into the drum and go to the next cycle without jamming.
- 4.3.5寸大触摸屏/3.5inch large touch screen

3.5寸电阻式大触摸屏，实时监控各个运动部件运动状态，大屏显示更清楚，参数调节更方便。
3.5 inch resistive large touch screen, real-time monitoring of each moving part movement status, large screen display more clearly, more convenient parameter adjustment.
- 5.供料效率可调节/Adjustable feeding efficiency

上料转盘速度及振动大小等参数直接在显示屏上调节，操作简单。
Parameters such as loading turntable speed and vibration size are directly adjusted on the display, easy to operate.
- 6.振动稳定/Vibration stabilization

送料通过电磁振动，振幅小，频率可调，使得振动稳定，电磁振动寿命长。
Feeding material through electromagnetic vibration with small amplitude and adjustable frequency makes the vibration stable and the electromagnetic vibration has long life.
- 7.缺料报警功能/Out of material alarm function

当料仓发生缺料超时，供料器会自动报警提示。
The feeder will automatically alarm when there is a shortage of material in the bin.
- 8.扩展性强/Highly scalable

自主研发控制线路板，功能强大，稳定性好，可根据客户需求定制，可扩展能力强。
Self-developed control circuit board, powerful and stable, can be customized according to customer needs, with strong scalability.

”

本机可适用 M1.4-M6.0 范围内多种规格螺丝气吹式供料，螺丝机通过气管直接将螺丝吹送至夹嘴，搭配机器人完成锁附，供料器自动完成送料系统，只需发送要料信号即可将料吹至夹嘴中，控制简单，效率高。

This machine can be used to supply screws of various specifications within the range of M1.4-M6.0 by air blowing. The screwdriver blows the screws directly to the clamping nozzle through the air pipe, and with the robot to complete the locking attachment, the feeder automatically completes the feeding system, and the material is blown to the clamping nozzle by sending the signal of the material demanded, which is simple in control and high in efficiency.

产品配置（选配）

Product Configuration (Optional)



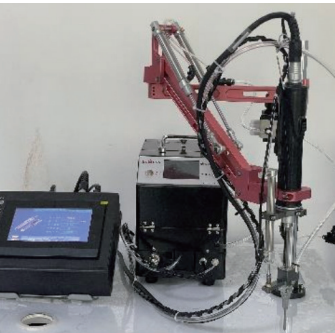
* 针对不锈钢螺丝或弱磁性螺丝可采用双行程气缸的方式，针对有沉孔或干涉可采用吹 + 吸的方式，可以保证螺丝顺畅出料和锁附。

For stainless steel screws or weak magnetic screws can be used in the way of double-stroke cylinders, for countersunk holes or interference can be used in the way of blowing + suction, can ensure that the screws are smoothly discharged and locking attachment.



* 可按实际需求选择搭配标准计数电批、智能数控型电批，可监控螺丝漏打、滑牙、浮锁等，并实时对数据进行追溯、发送和保存。

Standard counting wrenches and intelligent numerical control wrenches can be selected according to the actual needs, which can monitor the leakage of screws, slippery teeth, floating locks, etc., and trace, send and save the data in real time.



螺钉适用范围

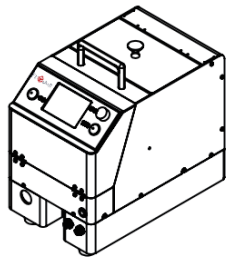
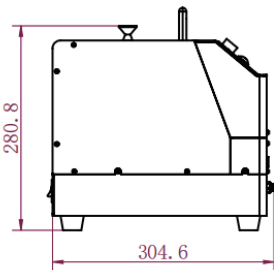
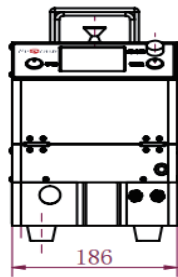
Scope of application of screws



适用螺钉类型 Applicable screw type	螺钉范围 Screw range	螺钉总长L Total length of screws L (mm)	螺帽直径D Nut diameter D (mm)	长径比L/D Ratio (L/D)	螺钉材质 Screw Material	适用工况 Applicable working conditions
标准螺钉 Standard screws	M1.4-M6	≤16	4≤D≤8	≥1.5	铁质/无磁 Ferrous/non-magnetic	平孔/深孔或干涉 高度小于40mm Flat hole/deep hole or interference height less than 40mm
组合螺钉 Combination screw	M1.4-M6	≤16	4≤D≤8	≥1.5	铁质/无磁 Ferrous/non-magnetic	平孔/深孔或干涉 高度小于40mm Flat hole/deep hole or interference height less than 40mm
非标螺钉 Non-standard screws	≤M6	≤20	2.5≤D≤12	≥1.4	铁质/无磁 Ferrous/non-magnetic	平孔/深孔或干涉 高度小于40mm Flat hole/deep hole or interference height less than 40mm

■ 非标螺钉均为定制，需以实物评估吹送可行性
Non-standard screws are all customized, and the feasibility of blowing needs to be evaluated in kind.

产品尺寸
Product Size



选型参数

Selection Parameters

产品型号 Product Model	外形尺寸 Overall dimensions L*W*H(mm)	重量 (不含电批) Weight (without electric batches) Kg	容量 Capacity CC	工作气压 Working Air Pressure Mpa	电源 Power V/Hz	额定 功率 Rating W	吹钉管 Staple M	输出速度 Output speed Pcs/min	定制 Custo- misation
EQ-3000-700ML	295*186*280	11	700	0.4-0.8	AC220V /50Hz	30	2	60-100	N
EQ-3000-S-700ML	295*186*280	11	700	0.4-0.8	AC220V /50Hz	30	2	60-100	N
EQ-3000-B-700ML	295*186*280	11	700	0.4-0.8	AC220V /50Hz	30	2	60-90	N
EQ-3000-SZ-700ML	295*186*280	11	700	0.4-0.8	AC220V /50Hz	30	2	60-80	N
EQ-3000-M-700ML	295*186*280	11	700	0.4-0.8	AC220V /50Hz	30	2	60-100	Y
EQ-3000-CX-700ML	295*186*280	11	700	0.4-0.8	AC220V /50Hz	30	2	60-90	Y
EQ-3000-A-700ML	295*186*280	11	700	0.4-0.8	AC220V /50Hz	30	2	60-100	Y

■料道规格及螺钉类型只体现在最终型号中
The hopper size and screw type are only reflected in the final model.

EQ-3100

自动机用气吹螺丝机

Air Blow Screw Machine for Automatic Machines

产品说明

Product Description

- 1.全自动供料/Fully automatic feeding

全自动送料系统，将螺丝吹送至批头，直接锁附产品，操作简单，效率高。
Fully automatic feeding system, blowing and feeding screws to the batch head, directly locking and attaching products, easy to operate and high efficiency.
- 2.横拉式分料/Cross-draw type dividing material

螺丝分料通过气缸横拉分料，分料稳定，不卡料，分料速度快。
The screw dividing material is divided by cylinder cross-pull, which is stable, no jamming and fast.
- 3.运转流畅/Smooth running

螺丝在滚筒内运转，未按正常方向进入轨道的螺丝，都会掉到滚筒内，进入下个循环，无卡料现象。
The screws run inside the drum, and any screws that do not enter the track in the normal direction will fall into the drum and go to the next cycle without jamming.
- 4.3.5寸大触摸屏/3.5 inch large touch screen

3.5寸电阻式大触摸屏，实时监控各个运动部件运动状态，大屏显示更清楚，参数调节更方便。
3.5 inch resistive large touch screen, real-time monitoring of each moving part movement status, large screen display more clearly, more convenient parameter adjustment.
- 5.供料效率可调节/Adjustable feeding efficiency

上料转盘速度及振动大小等参数直接在显示屏上调节，操作简单。
Parameters such as loading turntable speed and vibration size are directly adjusted on the display, easy to operate.
- 6.振动稳定/Vibration stabilization

送料通过电磁振动，振幅小，频率可调，使得振动稳定，电磁振动寿命长。
Feeding material through electromagnetic vibration with small amplitude and adjustable frequency makes the vibration stable and the electromagnetic vibration has long life.
- 7.缺料报警功能/Out of material alarm function

当料仓发生缺料超时，供料器会自动报警提示。
The feeder will automatically alarm when there is a shortage of material in the bin.
- 8.扩展性强/Highly scalable

自主研发控制线路板，功能强大，稳定性好，可根据客户需求定制，可扩展能力强。
Self-developed control circuit board, powerful and stable, can be customized according to customer needs, with strong scalability.

螺钉适用范围

Scope of application of screws



适用螺钉类型 Applicable screw type	螺钉范围 Screw range	螺钉总长L Total length of screws L (mm)	螺帽直径D Nut diameter D (mm)	长径比L/D Ratio (L/D)	螺钉材质 Screw Material	适用工况 Applicable working conditions
标准螺钉 Standard screws	M1.4-M6	≤16	4≤D≤8	≥1.5	铁质/无磁 Ferrous/non-magnetic	平孔/深孔或干涉 高度小于40mm Flat hole/deep hole or interference height less than 40mm
组合螺钉 Combination screw	M1.4-M6	≤16	4≤D≤8	≥1.5	铁质/无磁 Ferrous/non-magnetic	平孔/深孔或干涉 高度小于40mm Flat hole/deep hole or interference height less than 40mm
非标螺钉 Non-standard screws	≤M6	≤20	2.5≤D≤12	≥1.4	铁质/无磁 Ferrous/non-magnetic	平孔/深孔或干涉 高度小于40mm Flat hole/deep hole or interference height less than 40mm

■非标螺钉均为定制，需以实物评估吹送可行性
Non-standard screws are all customized, and the feasibility of blowing needs to be evaluated in kind.

产品配置 (选配)

Product Configuration (Optional)

*可另外定制一出二同步供料方式。通过两条管道同时输送螺丝,搭配双 Z 轴机器人完成锁附。

One out of two simultaneous feeding can be customised as an option. Simultaneous feeding of screws through two pipes and locking by dual Z-axis robots.

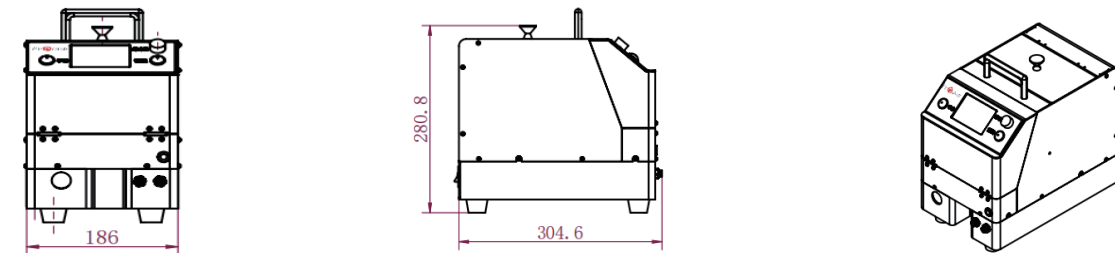


*可另外定制一出二异步供料方式。通过两条 管道 可选 择异步输送 螺 丝,互不干扰,搭配双 Z 轴机器人完成锁附。

An additional asynchronous one-out-of-two feeding method can be customised. Optional asynchronous feeding of screws through two tubes without interfering with each other, with dual Z-axis robots for locking attachments.

产品尺寸

Product Size



选型参数

Selection Parameters

产品型号 Product Model	外形尺寸 Overall dimensions L*W*H(mm)	重量 (不含电批) Weight (without electric batches) Kg	容量 Capacity CC	工作气压 Working Air Pressure Mpa	电源 Power V/Hz	额定 功率 Rating W	吹钉管 Staple M	输出速度 Output speed Pcs/min	节拍 Beats S
EQ-3100-700ML	295*186*280	11	700	0.4-0.8	AC220V /50Hz	30	2	60-100	1.5
EQ-3100-A-700ML	295*186*280	11	700	0.4-0.8	AC220V /50Hz	30	2	60-90	1.5
EQ-3110-700ML	295*186*280	11	700	0.4-0.8	AC220V /50Hz	30	2	40-80	1.5
EQ-3110-A-700ML	295*186*280	11	700	0.4-0.8	AC220V /50Hz	30	2	60-100	1.5
EQ-3120-700ML	295*186*280	11	700	0.4-0.8	AC220V /50Hz	30	2	60-90	1.5
EQ-3120-A-700ML	295*186*280	11	700	0.4-0.8	AC220V /50Hz	30	2	40-80	1.5

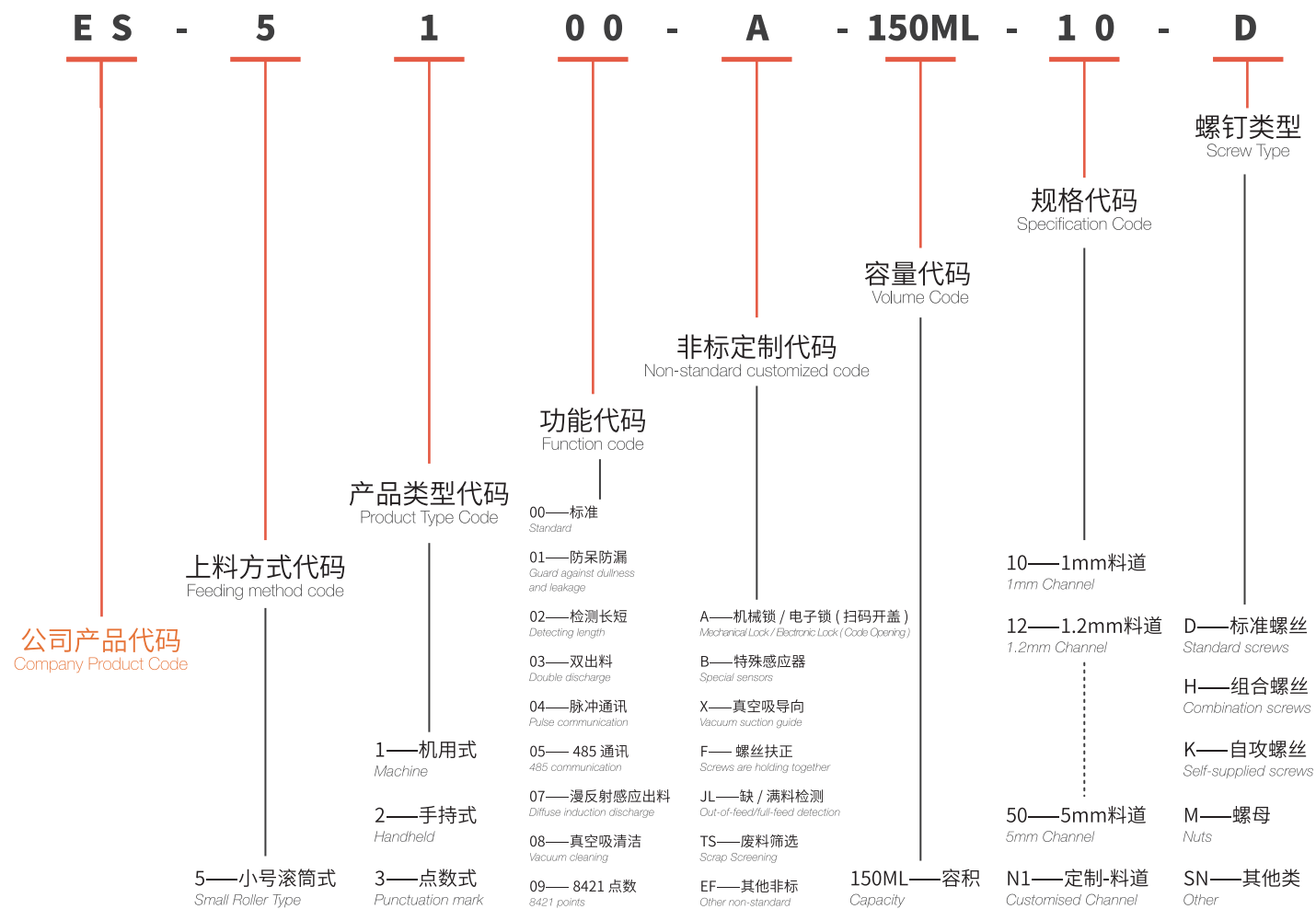
■ 料道规格及螺钉类型只体现在最终型号中
The hopper size and screw type are only reflected in the final model.

送钉机 (5系)

Feeder(5 Series)

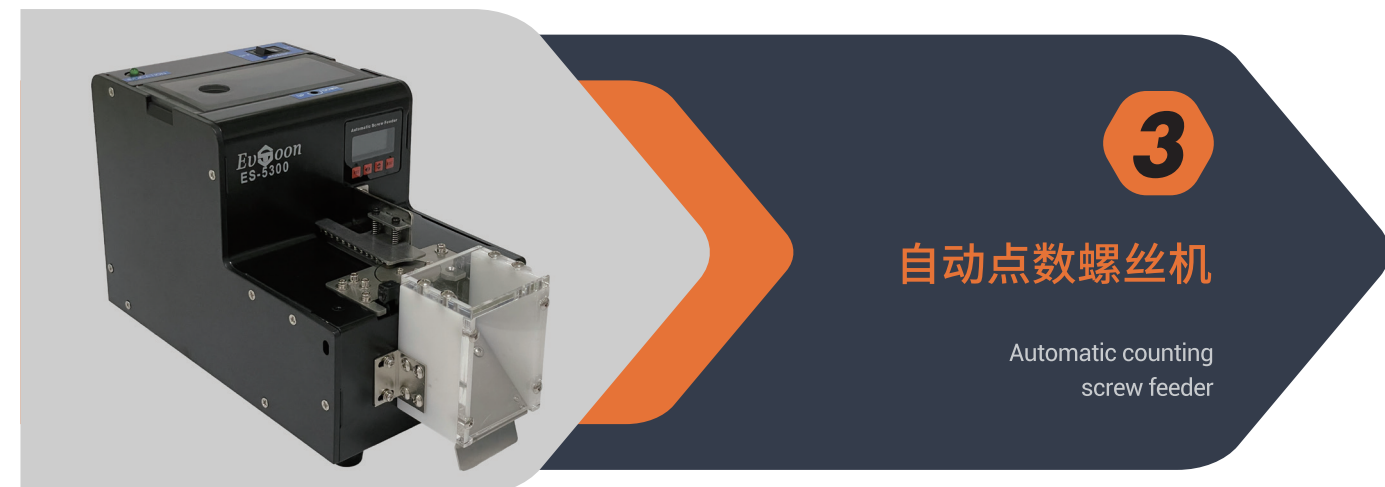
产品型号说明

Product Model Description



产品类型

Product Type



ES-5100

机用拾取式螺丝供料机

Mechanical pick-up screw feeder

产品说明

Product Description

1. 适用螺丝范围广 / Wide range of applicable screws

适用于M1.0-M5.0多种类型和长度螺丝, 如1:1短螺丝、自攻螺丝、组合螺丝、铆钉、螺母等。

Suitable for M1.0-M5.0 many types and lengths of screws, such as 1:1 short screws, self-tapping screws, combination screws, rivets, nuts, etc.

2. 转盘式分料 / Rotary type dividing material

螺丝分料通过气缸横拉分料, 分料稳定, 不卡料, 分料速度快。

Turntable type discharge, each discharge position is accurate, repeat positioning accuracy ± 0.1 , can better match the robot work.

3. 运转流畅 / Smooth running

螺丝在滚筒内运转, 未按正常方向进入轨道的螺丝, 都会掉到滚筒内, 进入下个循环, 无卡料现象。

The screws run inside the drum, and any screws that do not enter the track in the normal direction will fall into the drum and go to the next cycle without jamming.

4. 液晶显示计数 / LCD display counting

通过数码显示面板可以设置不同参数, 调节方便, 参数直观。

Different parameters can be set through the digital display panel, easy to adjust and intuitive parameters.

5. 供料效率可调节 / Adjustable feeding efficiency

上料转速度及振动大小等参数直接在显示屏上调节, 操作简单。

Parameters such as loading turntable speed and vibration size are directly adjusted on the display, easy to operate.

6. 抗强光干扰 / Anti-glare interference

功能升级, 不受强光干扰, 在强光下依然能正常工作。

The induction function is upgraded, which is not disturbed by the glare and can still work normally in strong light.

7. 缺料报警功能 / Out of material alarm function

当料仓发生缺料超时, 供料器会自动报警提示。

The feeder will automatically alarm when there is a shortage of material in the bin.

8. 过载保护 / Overload protection

全面升级控制主板, 对上料电机及分度盘步进电机, 出现卡料时, 系统自动控制电机反转一定时间, 有效保护电机和线路板。

A comprehensive upgrade of the control board, the loading motor and indexing plate stepping motor, the system automatically control the motor reverses a certain time when there is a material jam. Effective protection of motor and circuit board

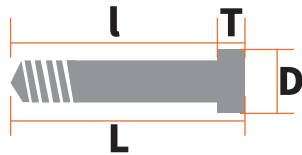
99

本机是滚筒式上料搭配转盘式分料, 供料稳定操作简单, 适用于多种规格范围内螺钉或类似螺钉零件的供料, 单颗定点供料, 方便机器取料。

This machine is a drum type feeding with turntable type material distribution, stable feeding and simple operation, suitable for a wide range of specifications within the scope of the screw or similar screw parts feeding, single fixed-point feeding, convenient for the machine to pick up the material.

螺钉适用范围

Scope of application of screws

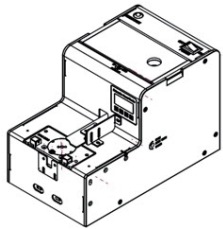
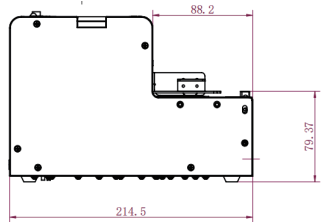
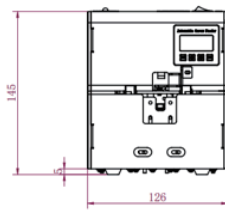


适用螺钉类型 Applicable screw type	螺杆直径d Screw Diameter	螺杆长度l Screw length l (mm)	螺帽直径D Nut diameter D (mm)	螺帽厚度T Nut thickness (T)	螺钉材质 Screw Material
标准螺钉 Standard screws	M1-M5	≤ 15	$1.2 \leq D \leq 9$	≥ 0.5	铁质/无磁 Ferrous/non-magnetic
组合螺钉 Combination screw	M1-M5	≤ 15	$1.2 \leq D \leq 9$	≥ 1	铁质/无磁 Ferrous/non-magnetic
非标螺钉 Non-standard screws	M1-M5	≤ 15	$1 \leq D \leq 10$	≥ 0.2	铁质/无磁 Ferrous/non-magnetic

■ 非标螺钉均为定制, 需以实物评估吹送可行性
Non-standard screws are all customized, and the feasibility of blowing needs to be evaluated in kind.

产品尺寸

Product Size



增值功能 (选配)

Value-added features (optional)

1. 长短钉检测 / 废料筛选 ----- 适用于螺钉规格接近或对螺钉公差要求严格的应用场合

Short and long nails inspection / Waste screening---Suitable for applications where screws are close in specification or where tight screw tolerances are required.

对螺丝长短检测混料或错放料, 自动筛选, 有效防止, 提高产品合格率。

The length of the screws to detect the mixing of materials or misplaced materials, automatic screening, effective prevention, improve product qualification rate.

2. 扫码开盖 ----- 有效防止员工混料, 出现少钉或多钉现象, 权限管控精确数据

Scan the code to open the lid---Effectively prevent employees from mixing materials, the phenomenon of under-nailing or over-nailing, the authority to control the precise data.

加入电磁锁, 对加料上盖锁密, 防止产线员工误操作, 权限操作扫码或特殊

Add electromagnetic lock, to add material on the cover of the lock, to prevent the production line staff misuse, authority to operate the code or special decryption to open the cover.



3. 真空吸清洁 ----- 满足 3C 电子行业对清洁度的高要求, 无尘供料, 保障送料过程的可靠性

Vacuum cleaning--- Meet the high cleanliness requirements of the 3C electronics industry, dust-free feeding, guaranteeing the reliability of the feeding process.

真空吸附 + 真空过滤器双重清洁, 减少碎屑对产品本身的污染

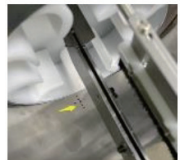
Vacuum adsorption + vacuum filter double cleaning, reduce the debris on the product itself.

4. 螺钉一出二 - ----- 满足个别产线对特殊锁附产品的双取料需求

screw one out of two---Meet the needs of individual production lines for double pick-up of special locking products.

转盘一次同时出 2 颗螺钉, 机械手可以同时吸取, 效率更高

2 screws at a time out of the turntable at the same time, the robot can pick up at the same time, more efficient.

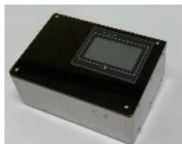


5. 脉冲 / 485 外接通讯 ----- 可远程 PLC 通讯操控螺丝机工作状态, 智能管控

Pulse / 485 external communication---Remote PLC communication to control the working status of the screw machine, intelligent control.

通过脉冲 / 485 模块可以远程发送指令, 对供料器启停、完成、缺料信号的控制, 也可一对多台控制

Through the pulse / 485 module can be sent remotely to send commands to the feeder start-stop, completion, the lack of material signal control, can also be a pair of multiple control.



6. 缺料 / 满料检测 ----- 配备缺料, 满料感应器, 可实时监测生产状态, 有效管理

Out-of-feed / full-feed detection---Equipped with out-of-feed and full-feed sensors, it can monitor the production status in real time for effective management.

通过感应器检测料仓内物料的缺料, 满料状态, 同时发出报警信号, 方便及时进行处理

Detect the lack of material in the silo through the sensor, full of material state, and at the same time send out an alarm signal, convenient and timely processing.

选型参数

Selection Parameters

型号 Model	外形尺 寸 Dimension L*W*H (mm)	重量 (Kg)	容量 (CC)	输出速度 (Pcs/min)	电 源 Power	过载保护 Overload protection	长短检测 Long and short detection	双出料 Double Outlet	PLC通讯 PLC communication	真空清洁 Vacuum cleaning	扫码开盖 Scan the code to open the lid	特殊感应 Special sense	吸嘴导向 Nozzle guidance	螺丝扶正 Screw correction	缺 / 满料检测 Out of level / full detection	废料筛选 Scrap Screening				
ES-5100-150ML	214.5 X 126 X 148	2.8	150	50 - 120	输入： AC 110V-220V 输出： DC15V/2A 功率： 30W	过载停转或反转， 保护马达与线路板， 恢复后正转动作 Overload stops or reverses, protects motor and circuit boards, positive operation after recovery.	—	—	—	—	—	—	—	—	—	—				
ES-5100-A-150ML		2.8					—	—	—	○	—	—	—	—	—	—				
ES-5100-B-150ML		2.8					—	—	—	—	○	—	—	—	—	—				
ES-5100-X-150ML		2.9					—	—	—	—	—	○	—	—	—	—				
ES-5100-F-150ML		2.8					—	—	—	—	—	—	○	—	—	—				
ES-5100-JL-150ML		2.9					—	—	—	—	—	—	—	—	○	—	—			
ES-5102-150ML		2.8					○	—	—	—	—	—	—	—	—	—	—			
ES-5102-A-150ML		2.8					○	—	—	—	○	—	—	—	—	—	—			
ES-5102-B-150ML		2.8					○	—	—	—	—	○	—	—	—	—	—			
ES-5102-X-150ML		2.9					○	—	—	—	—	—	○	—	—	—	—			
ES-5102-F-150ML		2.8					○	—	—	—	—	—	—	○	—	—	—			
ES-5102-JL-150ML		2.9					○	—	—	—	—	—	—	—	—	○	—			
ES-5102-TS-150ML		3.0					○	—	—	—	—	—	—	—	—	—	○	—		
ES-5103-150ML		2.8					—	○	—	—	—	—	—	—	—	—	—	—		
ES-5103-A-150ML		2.8					—	○	—	—	—	—	○	—	—	—	—	—		
ES-5103-JL-150ML		2.9					—	○	—	—	—	—	—	—	—	—	○	—		
ES-5104-150ML		3.0					—	—	○	—	—	—	—	—	—	—	—	—		
ES-5104-A-150ML		3.2					—	—	—	○	—	—	○	—	—	—	—	—		
ES-5104-B-150ML		3.0					—	—	—	—	○	—	—	—	○	—	—	—		
ES-5104-X-150ML		3.1					—	—	—	—	○	—	—	—	—	○	—	—		
ES-5104-F-150ML		3.0					—	—	—	—	○	—	—	—	—	—	○	—		
ES-5104-JL-150ML		3.1					—	—	—	—	○	—	—	—	—	—	—	○	—	
ES-5105-150ML		2.9					—	—	—	—	—	—	○	—	—	—	—	—	—	
ES-5105-A-150ML		2.9					—	—	—	—	—	—	—	○	—	—	—	—	—	
ES-5105-B-150ML		2.9					—	—	—	—	—	—	—	○	—	—	—	—	—	
ES-5105-X-150ML		3.0					—	—	—	—	—	—	—	—	—	○	—	—	—	
ES-5105-F-150ML		2.9					—	—	—	—	—	—	—	—	—	—	○	—	—	
ES-5105-JL-150ML		3.0					—	—	—	—	—	—	—	—	—	—	—	○	—	
ES-5108-150ML		3.3					—	—	—	—	—	—	—	○	—	—	—	—	—	—
ES-5108-A-150ML		3.5					—	—	—	—	—	—	—	○	○	—	—	—	—	—
ES-5108-B-150ML		3.5					—	—	—	—	—	—	—	○	—	○	—	—	—	—
ES-5108-X-150ML		3.6					—	—	—	—	—	—	—	—	○	—	○	—	—	—
ES-5108-F-150ML		3.5					—	—	—	—	—	—	—	—	○	—	—	○	—	—
ES-5108-JL-150ML		3.6					—	—	—	—	—	—	—	—	○	—	—	—	○	—

■ 规格及螺钉类型只体现在最终型号中
The type and screw type are only reflected in the final model.

ES-5200

手取式螺丝供料机

Hand-held screw feeder

产品说明

Product Description

1.适用螺丝范围广/Wide range of applicable screws

适用于M1.0-M5.0多种类型和长度螺丝，如1:1短螺

丝、自攻螺丝、组合螺丝、铆钉、螺母等。

Suitable for M1.0-M5.0 many types and lengths of screws, such as 1:1 short screws, self-tapping screws, combination screws, rivets, nuts, etc.

2.转盘式分料/Rotary type dividing material

螺丝分料通过气缸横拉分料，分料稳定，不卡料，分料速度快。

Turntable type discharge, each discharge position is accurate, repeat positioning accuracy ± 0.1 , can better match the robot work.

3.运转流畅/Smooth running

螺丝在滚筒内运转，未按正常方向进入轨道的螺丝，都会掉到滚筒内，进入下个循环，无卡料现象。

The screws run inside the drum, and any screws that do not enter the track in the normal direction will fall into the drum and go to the next cycle without jamming.

4.液晶显示计数/LCD display countinging

通过数码显示面板可以设置不同参数，调节方便，参数直观。

Different parameters can be set through the digital display panel, easy to adjust and intuitive parameters.

5.供料效率可调节/Adjustable feeding efficiency

上料转盘速度及振动大小等参数直接在显示屏上调节，操作简单。

Parameters such as loading turntable speed and vibration size are directly adjusted on the display, easy to operate.

6.抗强光干扰/Anti-glare interference

功能升级，不受强光干扰，在强光下依然能正常工作。

The induction function is upgraded, which is not disturbed by the glare and can still work normally in strong light.

7.缺料报警功能/Out of material alarm function

当料仓发生缺料超时，供料器会自动报警提示。

The feeder will automatically alarm when there is a shortage of material in the bin.

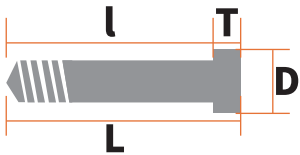
8.过载保护/Overload protection

全面升级控制主板，对上料电机及分度盘步进电机，出现卡料时，系统自动控制电机反转一定时间，有效保护电机和线路板。

A comprehensive upgrade of the control board, the loading motor and indexing plate stepping motor, the system automatically control the motor reverses a certain time when there is a material jam. Effective protection of motor and circuit board

螺钉适用范围

Scope of application of screws

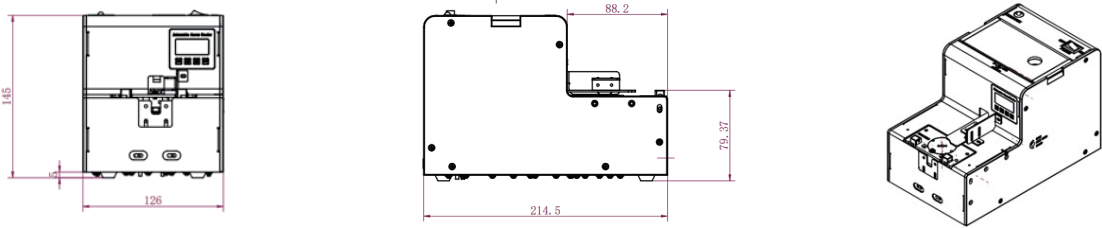


适用螺钉类型 Applicable screw type	螺杆直径d Screw Diameter	螺杆长度l Screw length l (mm)	螺帽直径D Nut diameter D (mm)	螺帽厚度T Nut thickness (T)	螺钉材质 Screw Material
标准螺钉 Standard screws	M1-M5	≤ 15	$1.2 \leq D \leq 9$	≥ 0.5	铁质/无磁 Ferrous/non-magnetic
组合螺钉 Combination screw	M1-M5	≤ 15	$1.2 \leq D \leq 9$	≥ 1	铁质/无磁 Ferrous/non-magnetic
非标螺钉 Non-standard screws	M1-M5	≤ 15	$1 \leq D \leq 10$	≥ 0.2	铁质/无磁 Ferrous/non-magnetic

■ 非标螺钉均为定制，需以实物评估吹送可行性
Non-standard screws are all customized, and the feasibility of blowing needs to be evaluated in kind.

产品尺寸

Product Size



增值功能（选配）

Value-added features (optional)

1. 长短钉检测 / 废料筛选 ----- 适用于螺钉规格接近或对螺钉公差要求严格的应用场合

Short and long nails inspection / Waste screening---Suitable for applications where screws are close in specification or where tight screw tolerances are required.

对螺丝长短检测混料或错放料，自动筛选，有效防止，提高产品合格率。
The length of the screws to detect the mixing of materials or misplaced materials, automatic screening, effective prevention, improve product qualification rate.

2. 扫码开盖 ----- 有效防止员工混料，出现少钉或多钉现象，权限管控精确数据

Scan the code to open the lid---Effectively prevent employees from mixing materials, the phenomenon of under-nailing or over-nailing, the authority to control the precise data.

加入电磁锁，对加料上盖锁密，防止产线员工误操作，权限操作扫码或特殊
Add electromagnetic lock, to add material on the cover of the lock, to prevent the production line staff misuse, authority to operate the code or special decryption to open the cover.



3. 真空吸清洁 ----- 满足 3C 电子行业对清洁度的高要求，无尘供料，保障送料过程的可靠性

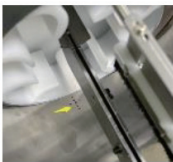
Vacuum cleaning--- Meet the high cleanliness requirements of the 3C electronics industry, dust-free feeding, guaranteeing the reliability of the feeding process.

真空吸附 + 真空过滤器双重清洁，减少碎屑对产品本身的污染
Vacuum adsorption + vacuum filter double cleaning, reduce the debris on the product itself.

4. 螺钉一出二 - ----- 满足个别产线对特殊锁附产品的双取料需求

screw one out of two---Meet the needs of individual production lines for double pick-up of special locking products.

转盘一次同时出 2 颗螺钉，机械手可以同时吸取，效率更高
2 screws at a time out of the turntable at the same time, the robot can pick up at the same time, more efficient.



5. 脉冲 /485 外接通讯 ----- 可远程 PLC 通讯操控螺丝机工作状态，智能管控

Pulse /485 external communication---Remote PLC communication to control the working status of the screw machine, intelligent control.

通过脉冲 /485 模块可以远程发送指令，对供料器启停、完成、缺料信号的控制，也可一对多台控制

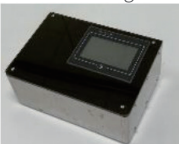
Through the pulse /485 module can be sent remotely to send commands to the feeder start-stop, completion, the lack of material signal control, can also be a pair of multiple control.



6. 缺料 / 满料检测 ----- 配备缺料，满料感应器，可实时监测生产状态，有效管理

Out-of-feed / full-feed detection---Equipped with out-of-feed and full-feed sensors, it can monitor the production status in real time for effective management.

通过感应器检测料仓内物料的缺料，满料状态，同时发出报警信号，方便及时进行处理
Detect the lack of material in the silo through the sensor, full of material state, and at the same time send out an alarm signal, convenient and timely processing.



选型参数

Selection Parameters

型号 Model	外形尺寸 Dimension L*W*H (mm)	重量 Weight (Kg)	容量 Capacity (CC)	输出速度 Output speed (Pcs/min)	电源 Power	过载保护 Overload protection	长短检测 Long and short detection	双出料 Double Outlet	PLC 通讯 PLC communication	真空清洁 Vacuum cleaning	扫码开盖 Scan the code to open the lid	特殊感应 Special sense	螺丝扶正 Screw扶正	缺 / 满料检测 Out-of-feed / full-feed detection	废料筛选 Waste Screening
ES-5200-150ML		2.8					—	—	—	—	—	—	—	—	—
ES-5200-A-150ML		3.0					—	—	—	—	○	—	—	—	—
ES-5200-B-150ML		2.8					—	—	—	—	—	○	—	—	—
ES-5200-F-150ML		2.8					—	—	—	—	—	—	○	—	—
ES-5200-JL-150ML		2.9					—	—	—	—	—	—	—	○	—
ES-5201-150ML		2.8					○	—	—	—	○	—	—	—	—
ES-5201-A-150ML		3.0					○	—	—	—	—	○	—	—	—
ES-5201-B-150ML		2.8					○	—	—	—	—	—	○	—	—
ES-5201-F-150ML		2.8					○	—	—	—	—	—	—	○	—
ES-5201-JL-150ML		2.9					○	—	—	—	—	—	—	—	—
ES-5202-150ML		2.8					—	○	—	—	—	—	—	—	—
ES-5202-A-150ML		3.0					—	○	—	—	○	V	—	—	—
ES-5202-B-150ML		2.8					—	○	—	—	○	○	—	—	—
ES-5202-F-150ML		2.8					—	○	—	—	—	—	○	—	—
ES-5202-JL-150ML	214.5 X 126 X 148	2.9					—	○	—	—	—	—	—	○	—
ES-5202-TS-150ML		3.2	150	50 - 120	输入： AC 110V-220V 输出： DC15V/2A 功率： 30W		—	○	—	—	—	—	—	—	○
ES-5204-150ML		3.0					—	—	○	—	—	—	—	—	—
ES-5204-A-150ML		3.2					—	—	○	—	○	—	—	—	—
ES-5204-B-150ML		3.0					—	—	○	—	—	○	—	—	—
ES-5204-F-150ML		3.0					—	—	○	—	—	—	○	—	—
ES-5204-JL-150ML		3.1					—	—	○	—	—	—	—	○	—
ES-5205-150ML		2.9					—	—	○	—	—	—	—	—	—
ES-5205-A-150ML		3.1					—	—	○	—	○	—	—	—	—
ES-5205-B-150ML		2.9					—	—	○	—	—	○	—	—	—
ES-5205-F-150ML		2.9					—	—	○	—	—	—	○	—	—
ES-5205-JL-150ML		3.0					—	—	○	—	—	—	—	○	—
ES-5208-150ML		3.5					—	—	—	○	—	—	—	—	—
ES-5208-A-150ML		3.7					—	—	—	○	○	—	—	—	—
ES-5208-B-150ML		3.5					—	—	—	○	—	○	—	—	—
ES-5208-F-150ML		3.5					—	—	—	○	—	—	○	—	—
ES-5208-JL-150ML		3.6					—	—	—	○	—	—	—	○	—

■ 规格及螺钉类型只体现在最终型号中
The type and screw type are only reflected in the final model.

ES-5300

自动点数螺丝机 Automatic counting screw feeder

产品说明

Product Description

- 1.多组点数控制/Multi-group counting control

可以对物料进行1-15组不同数量的供料，点数数量准确。
The material can be supplied in different quantities from 1-15 groups, and the number of countings is accurate.
- 2.转盘式分料/Rotary type dividing material

转盘式出料，每次出料位置准确，重复定位精度±0.1，能够更好地搭配机械手工作。
Turntable type discharging, each discharging position is accurate, repeat positioning accuracy ±0.1, can better match the robot work.
- 3.运转流畅/Smooth running

螺丝在滚筒内运转，未按正常方向进入轨道的螺丝，都会掉到滚筒内，进入下个循环，无卡料现象。
The screws run inside the drum, and any screws that do not enter the track in the normal direction will fall into the drum and go to the next cycle without jamming.
- 4.液晶显示计数/LCD display countinging

通过数码显示面板可以设置不同参数，调节方便，参数直观。
Different parameters can be set through the digital display panel, easy to adjust and intuitive parameters.
- 5.供料效率可调节/Adjustable feeding efficiency

上料转盘速度及振动大小等参数直接在显示屏上调节，操作简单。
Parameters such as loading turntable speed and vibration size are directly adjusted on the display, easy to operate.
- 6.抗强光干扰/Anti-glare interference

功能升级，不受强光干扰，在强光下依然能正常工作。
The induction function is upgraded, which is not disturbed by the glare and can still work normally in strong light.
- 7.缺料报警功能/Out of material alarm function

当料仓发生缺料超时，供料器会自动报警提示。
The feeder will automatically alarm when there is a shortage of material in the bin.
- 8.过载保护/Overload protection

全面升级控制主板，对上料电机及分度盘步进电机，出现卡料时，系统自动控制电机反转一定时间，有效保护电机和线路板。
A comprehensive upgrade of the control board, the loading motor and indexing plate stepping motor, the system automatically control the motor reverses a certain time when there is a material jam. Effective protection of motor and circuit board

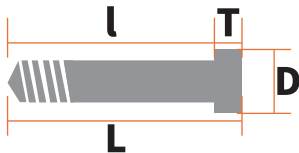
”

本机适用于多种规格范围内螺丝或类似螺丝的零件的点数包装，点数发货，定数打螺丝。可用于生产过程中对物料的权限管理，防止工人在锁附产品出现漏打多打螺丝或对物料的浪费现象，应用于自动流水线、螺丝打包、工位螺丝控制等领域。

This machine is suitable for a variety of specifications within the scope of screws or similar screws in the parts of the points of packaging, points of delivery, fixed number of screws. Can be used in the production process of the material rights management, to prevent workers in the lock attached to the product appears to miss playing more screws or waste of material phenomenon, applied to the automatic assembly line, screw packing, workplace screw control and other fields.

螺钉适用范围

Scope of application of screws

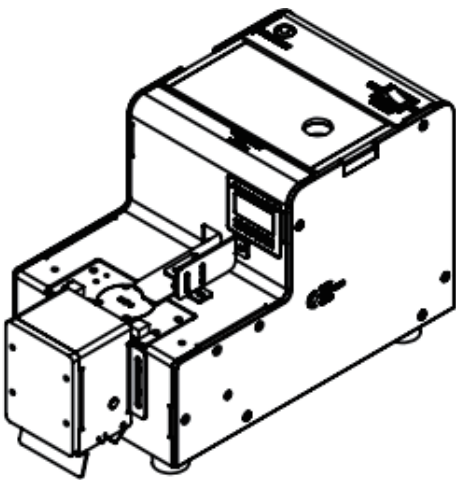
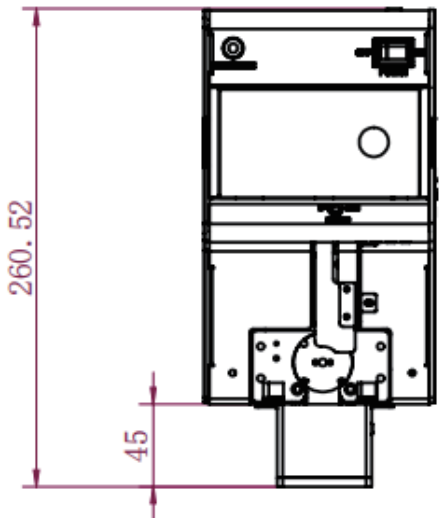
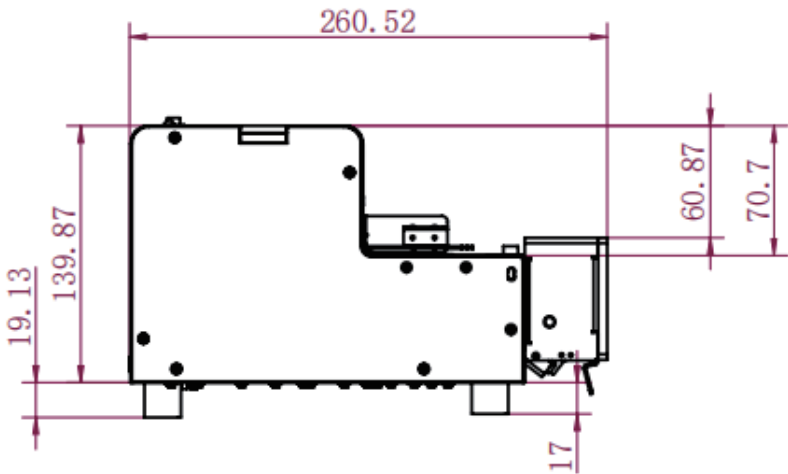
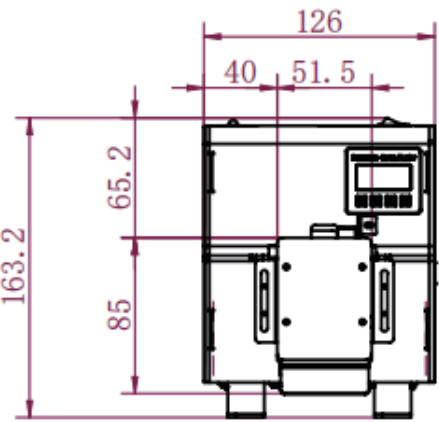


适用螺钉类型 Applicable screw type	螺杆直径d Screw Diameter	螺杆长度l Screw length l (mm)	螺帽直径D Nut diameter D (mm)	螺帽厚度T Nut thickness (T)	螺钉材质 Screw Material
标准螺钉 Standard screws	M1-M5	≤15	1.2≤D≤9	≥0.5	铁质/无磁 Ferrous/non-magnetic
组合螺钉 Combination screw	M1-M5	≤15	1.2≤D≤9	≥1	铁质/无磁 Ferrous/non-magnetic
非标螺钉 Non-standard screws	M1-M5	≤15	1≤D≤10	≥0.2	铁质/无磁 Ferrous/non-magnetic

■ 非标螺钉均为定制，需以实物评估吹送可行性
Non-standard screws are all customized, and the feasibility of blowing needs to be evaluated in kind.

产品尺寸

Product Size



增值功能（选配）

Value-added features (optional)

1.长短钉检测 / 废料筛选 ----- 适用于螺钉规格接近或对螺钉公差要求严格的应用场合
Short and long nails inspection / Waste screening---Suitable for applications where screws are close in specification or where tight screw tolerances are required.

对螺丝长短检测混料或错放料，自动筛选，有效防止，提高产品合格率。
The length of the screws to detect the mixing of materials or misplaced materials, automatic screening, effective prevention, improve product qualification rate.

2.扫码开盖 ----- 有效防止员工混料，出现少钉或多钉现象，权限管控精确数据
Scan the code to open the lid---Effectively prevent employees from mixing materials, the phenomenon of under-nailing or over-nailing, the authority to control the precise data.

加入电磁锁，对加料上盖锁密，防止产线员工误操作，权限操作扫码或特殊
Add electromagnetic lock, to add material on the cover of the lock, to prevent the production line staff misuse, authority to operate the code or special decryption to open the cover.



3.真空吸清洁 ----- 满足 3C 电子行业对清洁度的高要求，无尘供料，保障送料过程的可靠性
Vacuum cleaning--- Meet the high cleanliness requirements of the 3C electronics industry, dust-free feeding, guaranteeing the reliability of the feeding process.

真空吸附 + 真空过滤器双重清洁，减少碎屑对产品本身的污染
Vacuum adsorption + vacuum filter double cleaning, reduce the debris on the product itself.

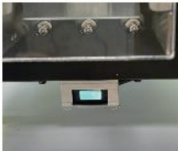
4.计数管控 - ----- 有效防止 生产过程中可能潜在的问题，精准管控对象
Counting Control - ----- Prevent potential problems in the production process and precisely control the targets.

料盒锁定，可以准确控制出料数量，防止 员工在操作过程中出现少钉或多钉现象
Box lock, can accurately control the amount of material, to prevent the staff in the process of operation of under-nailing or over-nailing phenomenon.



5.感应自动送料 ----- 提高了流水线生产效益，精确且快速
Sensorised Automatic Feeding ----- Improves assembly line productivity, accuracy and speed.

采用漫反射红外感应器，可以感应到接料盒的取放自动启动送钉，无需人工操作启动
Adopting diffuse infrared sensor, it can sense the pick and place of the receiving box and start to feed the nails automatically, no need for manual operation to start.

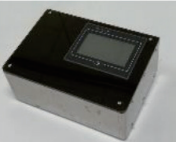


6.脉冲 /485 外接通讯 ----- 可远程 PLC 通讯操控螺丝机工作状态，智能管控
Pulse/485 external communication---Remote PLC communication to control the working status of the screw machine, intelligent control.

通过脉冲 /485 模块可以远程发送指令，对供料器启停、完成、缺料信号的控制，也可一对多台控制
Through the pulse /485 module can be sent remotely to send commands to the feeder start-stop, completion, the lack of material signal control, can also be a pair of multiple control.

7.缺料 / 满料检测 ----- 配备缺料，满料感应器，可实时监测生产状态，有效管理
Out-of-feed / full-feed detection---Equipped with out-of-feed and full-feed sensors, it can monitor the production status in real time for effective management.

通过感应器检测料仓内物料的缺料，满料状态，同时发出报警信号，方便及时进行处理
Detect the lack of material in the silo through the sensor, full of material state, and at the same time send out an alarm signal, convenient and timely processing.



选型参数

Selection Parameters

型号 Model	外形尺寸 Dimension L*W*H (mm)	重量 Weight (Kg)	容量 Capacity (CC)	输出速度 Output speed (Pcs/min)	电源 Power	过载保护 Overload protection	长短检测 Long and short detection	PLC 通讯 PLC communication	漫反射感应 Diffuse reflectance (Physics)	真空清洁 Vacuum cleaning	8421 点数 8421 points	扫码开盖 Scan the code to open the lid	特殊感应 Special sense	缺 / 满料检测 Out-of-feed / full-feed detection	废料筛选 Scrap Screening
ES-5300-150ML	259 X 126 X 163	2.8	150	50 - 120	输入： AC 110V-220V 输出： DC15V/2A 功率： 30W	过载停转或反转，保护马达与线路板，恢复后正转动作	—	—	—	C	—	—	—	—	—
ES-5300-A-150ML		3.0					—	—	—	—	—	○	—	—	—
ES-5300-B-150ML		2.8					—	—	—	—	—	—	○	—	—
ES-5300-JL-150ML		2.9					—	—	—	—	—	—	—	○	—
ES-5302-150ML		2.8						—	—	—	—	—	—	—	—
ES-5302-A-150ML		3.0					—	—	—	—	—	○	—	—	—
ES-5302-JL-150ML		2.8					—	—	—	—	—	—	—	○	—
ES-5302-TS-150ML		2.9					—	—	—	—	—	—	—	—	○
ES-5304-150ML		2.8					—	○	—	—	—	—	—	—	—
ES-5304-A-150ML		3.0					—	○	—	—	—	○	—	—	—
ES-5304-JL-150ML		2.8					—	○	—	—	—	—	—	○	—
ES-5305-150ML		2.9					—	○	—	—	—	—	—	—	—
ES-5305-A-150ML		3.2					—	○	—	—	—	○	—	—	○
ES-5305-JL-150ML		3.2					—	○	—	—	—	—	—	○	—
ES-5307-150ML		3.0					—	—	○	—	—	—	—	—	—
ES-5307-A-150ML		3.0					—	—	○	—	—	○	—	—	—
ES-5307-JL-150ML		2.9					—	—	○	—	—	—	—	○	—
ES-5308-150ML		3.1					—	—	—	○	—	—	—	—	—
ES-5308-A-150ML		2.9					—	—	—	○	—	○	—	—	—
ES-5308-JL-150ML		3.0					—	—	—	○	—	—	—	○	—
ES-5309-150ML		3.5					—	—	—	—	○	—	—	—	—
ES-5309-A-150ML		3.7					—	—	—	—	○	○	—	—	—
ES-5309-JL-150ML		3.5					—	—	—	—	○	—	—	○	—

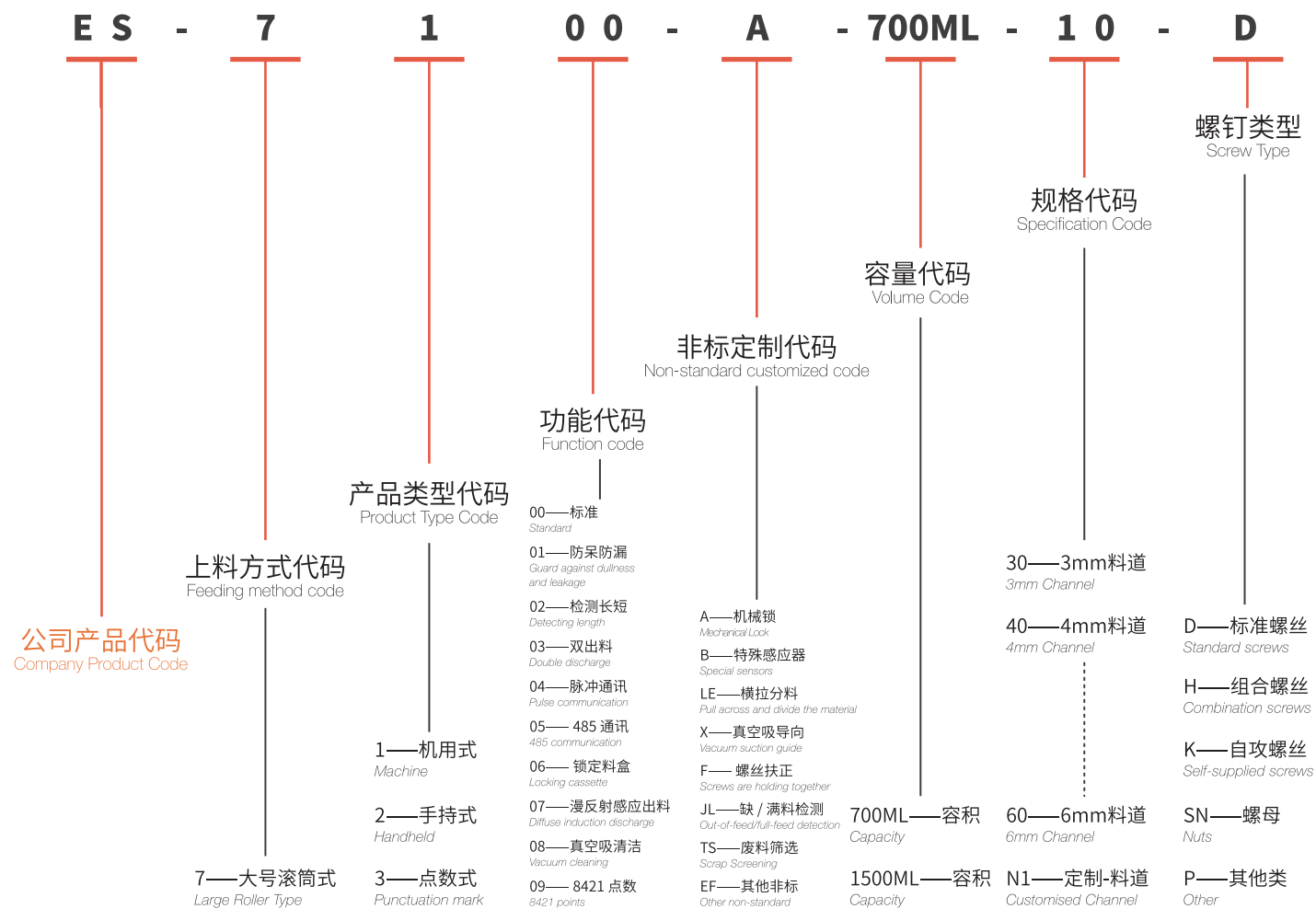
■ 规格及螺钉类型只体现在最终型号中
The type and screw type are only reflected in the final model.

送钉机 (7系)

Feeder(7 Series)

产品型号说明

Product Model Description



产品类型

Product Type



ES-7100

机用拾取式螺丝供料机

Mechanical pick-up screw feeder

产品说明

Product Description

1. 适用螺丝范围广 / Wide range of applicable screws

标准螺丝, 1:1 短螺丝、自攻螺丝、组合螺丝、铆钉、螺母等。

Standard screws, 1:1 short screws, self-tapping screws, combination screws, rivets, nuts, etc.

2. 转盘式分料 / Rotary type dividing material

螺丝分料通过气缸横拉分料, 分料稳定, 不卡料, 分料速度快。

Turntable type discharge, each discharge position is accurate, repeat positioning accuracy ± 0.1 , can better match the robot work.

3. 运转流畅 / Smooth running

螺丝在滚筒内运转, 未按正常方向进入轨道的螺丝, 都会掉到滚筒内, 进入下个循环, 无卡料现象。

The screws run inside the drum, and any screws that do not enter the track in the normal direction will fall into the drum and go to the next cycle without jamming.

4. 液晶显示计数 / LCD display countinging

通过数码显示面板可以设置不同参数, 调节方便, 参数直观。

Different parameters can be set through the digital display panel, easy to adjust and intuitive parameters.

5. 供料效率可调节 / Adjustable feeding efficiency

上料转盘速度及振动大小等参数直接在显示屏上调节, 操作简单。

Parameters such as loading turntable speed and vibration size are directly adjusted on the display, easy to operate.

6. 抗强光干扰 / Anti-glare interference

功能升级, 不受强光干扰, 在强光下依然能正常工作。

The induction function is upgraded, which is not disturbed by the glare and can still work normally in strong light.

7. 缺料报警功能 / Out of material alarm function

当料仓发生缺料超时, 供料器会自动报警提示。

The feeder will automatically alarm when there is a shortage of material in the bin.

8. 过载保护 / Overload protection

全面升级控制主板, 对上料电机及分度盘步进电机, 出现卡料时, 系统自动控制电机反转一定时间, 有效保护电机和线路板。

A comprehensive upgrade of the control board, the loading motor and indexing plate stepping motor, the system automatically control the motor reverses a certain time when there is a material jam. Effective protection of motor and circuit board

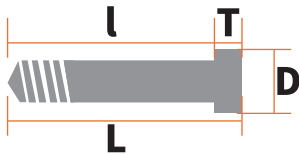
”

本机是滚筒式上料搭配转盘式分料, 供料稳定操作简单, 适用于多种规格范围内螺钉或类似螺钉零件的供料, 单颗定点供料, 方便机器取料。

This machine is a drum type feeding with turntable type material distribution, stable feeding and simple operation, suitable for a wide range of specifications within the scope of the screw or similar screw parts feeding, single fixed-point feeding, convenient for the machine to pick up the material.

螺钉适用范围

Scope of application of screws

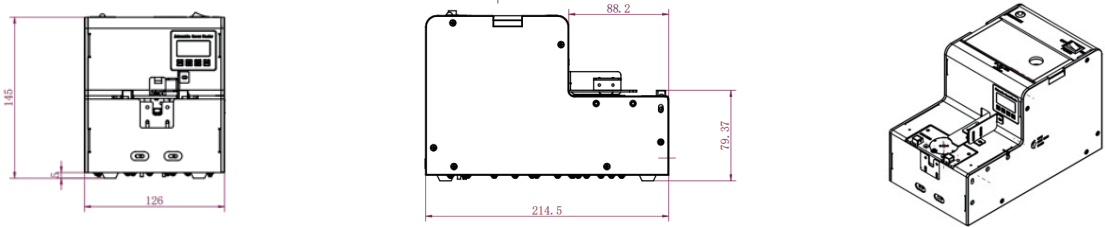


适用螺钉类型 Applicable screw type	螺杆直径d Screw Diameter	螺杆长度l Screw length l (mm)	螺帽直径D Nut diameter D (mm)	螺帽厚度T Nut thickness (T)	螺钉材质 Screw Material
标准螺钉 Standard screws	M3-M6	≤ 30	$3.2 \leq D \leq 12$	≥ 0.5	铁质/无磁 Ferrous/non-magnetic
组合螺钉 Combination screw	M3-M6	≤ 30	$3.2 \leq D \leq 12$	≥ 1	铁质/无磁 Ferrous/non-magnetic
非标螺钉 Non-standard screws	M3-M6	≤ 30	$3 \leq D \leq 14$	≥ 0.2	铁质/无磁 Ferrous/non-magnetic

■ 非标螺钉均为定制, 需以实物评估可行性
Non-standard screws are custom-made and need to be physically assessed for feasibility.

产品尺寸

Product Size



增值功能 (选配)

Value-added features (optional)

1. 长短钉检测 / 废料筛选 ----- 适用于螺钉规格接近或对螺钉公差要求严格的应用场合

Short and long nails inspection / Waste screening---Suitable for applications where screws are close in specification or where tight screw tolerances are required.

对螺丝长短检测混料或错放料, 自动筛选, 有效防止, 提高产品合格率。

The length of the screws to detect the mixing of materials or misplaced materials, automatic screening, effective prevention, improve product qualification rate.

2. 扫码开盖 ----- 有效防止员工混料, 出现少钉或多钉现象, 权限管控精确数据

Scan the code to open the lid---Effectively prevent employees from mixing materials, the phenomenon of under-nailing or over-nailing, the authority to control the precise data.

加入电磁锁, 对加料上盖锁密, 防止产线员工误操作, 权限操作扫码或特殊

Add electromagnetic lock, to add material on the cover of the lock, to prevent the production line staff misuse, authority to operate the code or special decryption to open the cover.

3. 真空吸清洁 ----- 满足 3C 电子行业对清洁度的高要求, 无尘供料, 保障送料过程的可靠性

Vacuum cleaning--- Meet the high cleanliness requirements of the 3C electronics industry, dust-free feeding, guaranteeing the reliability of the feeding process.

真空吸附 + 真空过滤器双重清洁, 减少碎屑对产品本身的污染

Vacuum adsorption + vacuum filter double cleaning, reduce the debris on the product itself.

4. 螺钉一出二 - ----- 满足个别产线对特殊锁附产品的双取料需求

screw one out of two---Meet the needs of individual production lines for double pick-up of special locking products.

转盘一次同时出 2 颗螺钉, 机械手可以同时吸取, 效率更高

2 screws at a time out of the turntable at the same time, the robot can pick up at the same time, more efficient.

5. 脉冲 / 485 外接通讯 ----- 可远程 PLC 通讯操控螺丝机工作状态, 智能管控

Pulse / 485 external communication---Remote PLC communication to control the working status of the screw machine, intelligent control.

通过脉冲 / 485 模块可以远程发送指令, 对供料器启停、完成、缺料信号的控制, 也可一对多台控制

Through the pulse / 485 module can be sent remotely to send commands to the feeder start-stop, completion, the lack of material signal control, can also be a pair of multiple control.

6. 缺料 / 满料检测 ----- 配备缺料, 满料感应器, 可实时监测生产状态, 有效管理

Out-of-feed / full-feed detection---Equipped with out-of-feed and full-feed sensors, it can monitor the production status in real time for effective management.

通过感应器检测料仓内物料的缺料, 满料状态, 同时发出报警信号, 方便及时进行处理

Detect the lack of material in the silo through the sensor, full of material state, and at the same time send out an alarm signal, convenient and timely processing.

7. 气缸横拉式 ----- 可解决因转盘供料存在的不稳定因素出现的棱角卡料、变形等问题

Out-of-feed / full-feed detection---Equipped with out-of-feed and full-feed sensors, it can monitor the production status in real time for effective management.

采用气缸横拉分料, 横向往复运动, 运动平稳, 重复定位精准, 轨道与分料接口处增加进料感应器, 针对螺母、四方垫片螺丝或有棱角的物料等, 可以有效的解决转盘卡角问题

Function: Adopt the cylinder to pull the material horizontally, transverse reciprocating motion, smooth movement, repeat the positioning accuracy, the track and the interface with the material to increase the feed sensor, for nuts, four-way spacer screws or angular materials, etc., can effectively solve the problem of the turntable jamming angle.

选型参数

Selection Parameters

型号 Model	外形尺 寸 Dimension L*W*H (mm)	重量 (Kg)	容量 (CC)	输出速度 (Pcs/min)	电 源 Power	过载保护 Overload protection	长短检测 Long and short detection	双出料 Double Outlet	PLC通讯 PLC communication	真空清洁 Vacuum cleaning	扫码开盖 Scan the code to open the lid	特殊感应 Special sense	吸嘴导向 Nozzle guidance	螺丝扶正 Screw straightening	横拉分料 Lateral screw and dividing the material	缺 / 满料检测 Out-of-feed/Full-feed detection	废料筛选 Scrap Screening			
ES-7100-700ML	278 X 185.4 X 185.3	5.5	700	50 - 120	输入： AC 110V-220V 输出： DC15V/2A 功率： 30W	过载停 转或反 转，保 护马 达与线 路板， 恢复后 正转动 作 Overload stop or reverses, protects motor and circuit boards, positive operation after recovery.	—	—	—	—	—	—	—	—	—	—	—			
ES-7100-A-700ML		5.8					—	—	—	○	—	—	—	—	—	—				
ES-7100-B-700ML		5.5					—	—	—	—	○	—	—	—	—	—				
ES-7100-X-700ML		5.8					—	—	—	—	—	○	—	—	—	—				
ES-7100-F-700ML		5.5					—	—	—	—	—	—	○	—	—	—				
ES-7100-LE-700ML		5.8					—	—	—	—	—	—	—	—	○	—	—			
ES-7100-JL-700ML		5.8					—	—	—	—	—	—	—	—	—	○	—			
ES-7102-700ML		5.5					○	—	—	—	—	—	—	—	—	—	—			
ES-7102-A-700ML		5.8					○	—	—	—	○	—	—	—	—	—	—			
ES-7102-B-700ML		5.5					○	—	—	—	—	○	—	—	—	—	—			
ES-7102-X-700ML		5.8					○	—	—	—	—	—	○	—	—	—	—			
ES-7102-F-700ML		5.5					○	—	—	—	—	—	—	—	○	—	—			
ES-7102-JL-700ML		5.8					○	—	—	—	—	—	—	—	—	—	○	—		
ES-7102-TS-700ML		6.0					○	—	—	—	—	—	—	—	—	—	—	○		
ES-7103-700ML		5.5					—	○	—	—	—	—	—	—	—	—	—	—		
ES-7103-A-700ML		5.8					—	○	—	—	○	—	—	—	—	—	—	—		
ES-7103-JL-700ML		5.8					—	○	—	—	—	○	—	—	—	—	○	—		
ES-7104-700ML		5.8					—	—	○	—	—	—	○	—	—	—	—	—		
ES-7104-A-700ML		6.0					—	—	○	—	—	○	—	—	—	—	—	—		
ES-7104-B-700ML		5.8					—	—	○	—	—	—	○	—	—	—	—	—		
ES-7104-X-700ML		5.8					—	—	○	—	—	—	—	○	—	—	—	—		
ES-7104-F-700ML		5.8					—	—	○	—	—	—	—	—	—	○	—	—		
ES-7104-JL-700ML		5.8					—	—	○	—	—	—	—	—	—	—	—	○	—	
ES-7105-700ML		5.6					—	—	○	—	—	—	—	—	—	—	—	—	—	
ES-7105-A-700ML		5.8					—	—	○	—	—	○	—	—	—	—	—	—	—	
ES-7105-B-700ML		5.6					—	—	○	—	—	—	○	—	—	—	—	—	—	
ES-7105-X-700ML		5.6					—	—	○	—	—	—	—	○	—	—	—	—	—	
ES-7105-F-700ML		5.6					—	—	○	—	—	—	—	—	—	—	○	—	—	
ES-7105-JL-700ML		5.8					—	—	○	—	—	—	—	—	—	—	—	—	○	—
ES-7108-700ML		6.0					—	—	—	○	—	—	—	—	—	—	—	—	—	—
ES-7108-A-700ML		6.2					—	—	—	○	○	—	—	—	—	—	—	—	—	—
ES-7108-B-700ML		6.0					—	—	—	○	—	○	—	—	—	—	—	—	—	—
ES-7108-X-700ML		6.0					—	—	—	○	—	—	—	—	○	—	—	—	—	—
ES-7108-F-700ML		6.0					—	—	—	○	—	—	—	—	—	—	○	—	—	—
ES-7108-JL-700ML		6.2					—	—	—	○	—	—	—	—	—	—	—	—	—	○

■ 规格及螺钉类型只体现在最终型号中
The type and screw type are only reflected in the final model.

ES-7200

手取式螺丝供料机

Hand-held screw feeder

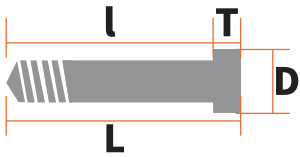
产品说明

Product Description

- 1.适用螺丝范围广/Wide range of applicable screws**
标准螺丝，1:1 短螺丝、自攻螺丝、组合螺丝、铆钉、螺母等。
Standard screws, 1:1 short screws, self-tapping screws, combination screws, rivets, nuts, etc.
- 2.转盘式分料/Rotary type dividing material**
螺丝分料通过气缸横拉分料，分料稳定，不卡料，分料速度快。
Turntable type discharge, each discharge position is accurate, repeat positioning accuracy ± 0.1 , can better match the robot work.
- 3.运转流畅/Smooth running**
螺丝在滚筒内运转，未按正常方向进入轨道的螺丝，都会掉到滚筒内，进入下个循环，无卡料现象。
The screws run inside the drum, and any screws that do not enter the track in the normal direction will fall into the drum and go to the next cycle without jamming.
- 4.液晶显示计数/LCD display countinging**
通过数码显示面板可以设置不同参数，调节方便，参数直观。
Different parameters can be set through the digital display panel, easy to adjust and intuitive parameters.
- 5.供料效率可调节/Adjustable feeding efficiency**
上料转盘速度及振动大小等参数直接在显示屏上调节，操作简单。
Parameters such as loading turntable speed and vibration size are directly adjusted on the display, easy to operate.
- 6.抗强光干扰/Anti-glare interference**
功能升级，不受强光干扰，在强光下依然能正常工作。
The induction function is upgraded, which is not disturbed by the glare and can still work normally in strong light.
- 7.缺料报警功能/Out of material alarm function**
当料仓发生缺料超时，供料器会自动报警提示。
The feeder will automatically alarm when there is a shortage of material in the bin.
- 8.过载保护/Overload protection**
全面升级控制主板，对上料电机及分度盘步进电机，出现卡料时，系统自动控制电机反转一定时间，有效保护电机和线路板。
A comprehensive upgrade of the control board, the loading motor and indexing plate stepping motor, the system automatically control the motor reverses a certain time when there is a material jam. Effective protection of motor and circuit board

螺钉适用范围

Scope of application of screws

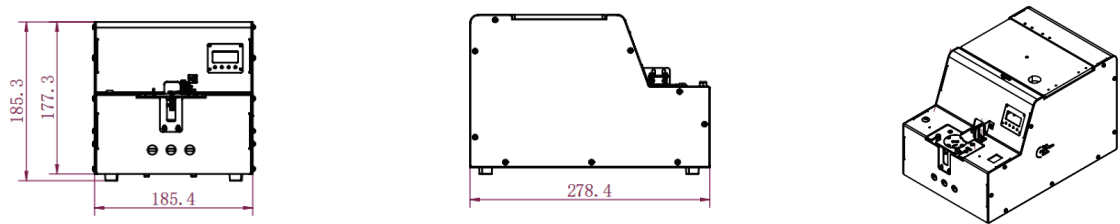


适用螺钉类型 Applicable screw type	螺杆直径d Screw Diameter	螺杆长度l Screw length l (mm)	螺帽直径D Nut diameter D (mm)	螺帽厚度T Nut thickness (T)	螺钉材质 Screw Material
标准螺钉 Standard screws	M3-M6	≤ 30	$3.0 \leq D \leq 12$	≥ 0.5	铁质/无磁 Ferrous/non-magnetic
组合螺钉 Combination screw	M3-M3	≤ 30	$3.0 \leq D \leq 12$	≥ 1	铁质/无磁 Ferrous/non-magnetic
非标螺钉 Non-standard screws	M3-M6	≤ 32	$3.0 \leq D \leq 14$	≥ 0.2	铁质/无磁 Ferrous/non-magnetic

■ 非标螺钉均为定制，需以实物评估吹送可行性
Non-standard screws are all customized, and the feasibility of blowing needs to be evaluated in kind.

产品尺寸

Product Size



增值功能（选配）

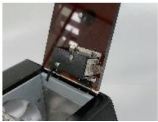
Value-added features (optional)

1.长短钉检测 / 废料筛选 ----- 适用于螺钉规格接近或对螺钉公差要求严格的应用场合
Short and long nails inspection / Waste screening---Suitable for applications where screws are close in specification or where tight screw tolerances are required.

对螺丝长短检测混料或错放料，自动筛选，有效防止，提高产品合格率。
The length of the screws to detect the mixing of materials or misplaced materials, automatic screening, effective prevention, improve product qualification rate.

2.扫码开盖 ----- 有效防止员工混料，出现少钉或多钉现象，权限管控精确数据
Scan the code to open the lid---Effectively prevent employees from mixing materials, the phenomenon of under-nailing or over-nailing, the authority to control the precise data.

加入电磁锁，对加料上盖锁密，防止产线员工误操作，权限操作扫码或特殊
Add electromagnetic lock, to add material on the cover of the lock, to prevent the production line staff misuse, authority to operate the code or special decryption to open the cover.

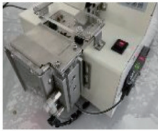


3.真空吸清洁 ----- 满足 3C 电子行业对清洁度的高要求，无尘供料，保障送料过程的可靠性
Vacuum cleaning--- Meet the high cleanliness requirements of the 3C electronics industry, dust-free feeding, guaranteeing the reliability of the feeding process.

真空吸附 + 真空过滤器双重清洁，减少碎屑对产品本身的污染
Vacuum adsorption + vacuum filter double cleaning, reduce the debris on the product itself.

4.螺钉一出二 - ----- 满足个别产线对特殊锁附产品的双取料需求
screw one out of two---Meet the needs of individual production lines for double pick-up of special locking products.

转盘一次同时出 2 颗螺钉，机械手可以同时吸取，效率更高
2 screws at a time out of the turntable at the same time, the robot can pick up at the same time, more efficient.

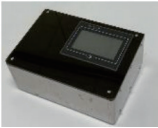


5.脉冲 /485 外接通讯 ----- 可远程 PLC 通讯操控螺丝机工作状态，智能管控
Pulse /485 external communication---Remote PLC communication to control the working status of the screw machine, intelligent control.

通过脉冲 /485 模块可以远程发送指令，对供料器启停、完成、缺料信号的控制，也可一对多台控制
Through the pulse /485 module can be sent remotely to send commands to the feeder start-stop, completion, the lack of material signal control, can also be a pair of multiple control.

6.缺料 / 满料检测 ----- 配备缺料，满料感应器，可实时监测生产状态，有效管理
Out-of-feed / full-feed detection---Equipped with out-of-feed and full-feed sensors, it can monitor the production status in real time for effective management.

通过感应器检测料仓内物料的缺料，满料状态，同时发出报警信号，方便及时进行处理
Detect the lack of material in the silo through the sensor, full of material state, and at the same time send out an alarm signal, convenient and timely processing.



7.气缸横拉式 ----- 可解决因转盘供料存在的不稳定因素出现的棱角卡料、变形等问题
Out-of-feed / full-feed detection---Equipped with out-of-feed and full-feed sensors, it can monitor the production status in real time for effective management.

采用气缸横拉分料，横向往复运动，运动平稳，重复定位精准，轨道与分料接口处增加进料感应器，针对螺母、四方垫片螺丝或有棱角的物料等，可以有效的解决转盘卡角问题
Function: Adopt the cylinder to pull the material horizontally, transverse reciprocating motion, smooth movement, repeat the positioning accuracy, the track and the interface with the material to increase the feed sensor, for nuts, four-way spacer screws or angular materials, etc., can effectively solve the problem of the turntable jamming angle.



选型参数

Selection Parameters

型号 Model	外形尺寸 Dimension L*W*H (mm)	重量 Weight (Kg)	容量 Capacity (CC)	输出速度 Output speed (Pcs/min)	电源 Power	过载保护 Overload protection	防呆防漏 Guard against dullness and leakage	长短检测 Long and short detection	PLC 通讯 PLC communication	真空清洁 Vacuum cleaning	扫码开盖 Scan the code to open the lid	特殊感应 Special sense	螺丝扶正 Screw correction	横拉分料 Horizontal pull and divide the material	缺 / 满料检测 Out-of-feed/full-feed detection	废料筛选 Waste Screening
ES-7200-700ML	278 X 185.4 X 185.3	5.5	700	50 - 120	输入： AC 110V-220V 输出： DC15V/2A 功率： 30W	过载停转或反转， 保护马达与线路板， 恢复后正转动作	—	—	—	—	—	—	—	—	—	—
ES-7200-A-700ML		5.8					—	—	—	—	○	—	—	—	—	—
ES-7200-B-700ML		5.5					—	—	—	—	—	○	—	—	—	—
ES-7200-F-700ML		5.5					—	—	—	—	—	—	○	—	—	—
ES-7200-LE-700ML		5.8					—	—	—	—	—	—	—	○	—	—
ES-7200-JL-700ML		5.8					—	—	—	—	—	—	—	—	○	—
ES-7201-700ML		5.5					○	—	—	—	○	—	—	—	—	—
ES-7201-A-700ML		5.8					○	—	—	—	—	○	—	—	—	—
ES-7201-B-700ML		5.5					○	—	—	—	—	—	○	—	—	—
ES-7201-F-700ML		5.5					○	—	—	—	—	—	—	—	○	—
ES-7201-JL-700ML		5.8					○	—	—	—	—	—	—	—	—	—
ES-7202-700ML		5.5					—	○	—	—	—	—	—	—	—	—
ES-7202-A-700ML		5.8					—	○	—	—	○	—	—	—	—	—
ES-7202-B-700ML		5.5					—	○	—	—	○	○	—	—	—	—
ES-7202-F-700ML		5.5					—	○	—	—	—	—	○	—	—	—
ES-7202-JL-700ML		5.8					—	○	—	—	—	—	—	—	○	—
ES-7202-TS-700ML		6.0					—	○	—	—	—	—	—	—	—	○
ES-7204-700ML		5.8					—	—	○	—	—	—	—	—	—	—
ES-7204-A-700ML		6.0					—	—	○	—	○	—	—	—	—	—
ES-7204-B-700ML		5.8					—	—	○	—	—	○	—	—	—	—
ES-7204-F-700ML		5.8					—	—	○	—	—	—	○	—	—	—
ES-7204-JL-700ML		6.0					—	—	○	—	—	—	—	—	○	—
ES-7205-700ML		5.6					—	—	○	—	—	—	—	—	—	—
ES-7205-A-700ML		5.8					—	—	○	—	○	—	—	—	—	—
ES-7205-B-700ML		5.6					—	—	○	—	—	○	—	—	—	—
ES-7205-F-700ML		5.6					—	—	○	—	—	—	○	—	—	—
ES-7205-JL-700ML		5.8					—	—	○	—	—	—	—	—	○	—
ES-7208-700ML		6.0					—	—	—	○	—	—	—	—	—	—
ES-7208-A-700ML		6.2					—	—	—	○	○	—	—	—	—	—
ES-7208-B-700ML		6.0					—	—	—	○	—	○	—	—	—	—
ES-7208-F-700ML		6.0					—	—	—	○	—	—	○	—	—	—
ES-7208-JL-700ML		6.2					—	—	—	○	—	—	—	—	○	—

规格及螺钉类型只体现在最终型号中
The type and screw type are only reflected in the final model.

ES-7300

自动点数螺丝机 Automatic counting screw feeder

产品说明

Product Description

- 1.多组点数控制/Multi-group counting control

可以对物料进行1-15组不同数量的供料，点数数量准确。
The material can be supplied in different quantities from 1-15 groups, and the number of countings is accurate.
- 2.转盘式分料/Rotary type dividing material

转盘式出料，每次出料位置准确，重复定位精度±0.1，能够更好地搭配机械手工作。
Turntable type discharging, each discharging position is accurate, repeat positioning accuracy ±0.1, can better match the robot work.
- 3.运转流畅/Smooth running

螺丝在滚筒内运转，未按正常方向进入轨道的螺丝，都会掉到滚筒内，进入下个循环，无卡料现象。
The screws run inside the drum, and any screws that do not enter the track in the normal direction will fall into the drum and go to the next cycle without jamming.
- 4.液晶显示计数/LCD display countinging

通过数码显示面板可以设置不同参数，调节方便，参数直观。
Different parameters can be set through the digital display panel, easy to adjust and intuitive parameters.
- 5.供料效率可调节/Adjustable feeding efficiency

上料转盘速度及振动大小等参数直接在显示屏上调节，操作简单。
Parameters such as loading turntable speed and vibration size are directly adjusted on the display, easy to operate.
- 6.抗强光干扰/Anti-glare interference

功能升级，不受强光干扰，在强光下依然能正常工作。
The induction function is upgraded, which is not disturbed by the glare and can still work normally in strong light.
- 7.缺料报警功能/Out of material alarm function

当料仓发生缺料超时，供料器会自动报警提示。
The feeder will automatically alarm when there is a shortage of material in the bin.
- 8.过载保护/Overload protection

全面升级控制主板，对上料电机及分度盘步进电机，出现卡料时，系统自动控制电机反转一定时间，有效保护电机和线路板。
A comprehensive upgrade of the control board, the loading motor and indexing plate stepping motor, the system automatically control the motor reverses a certain time when there is a material jam. Effective protection of motor and circuit board

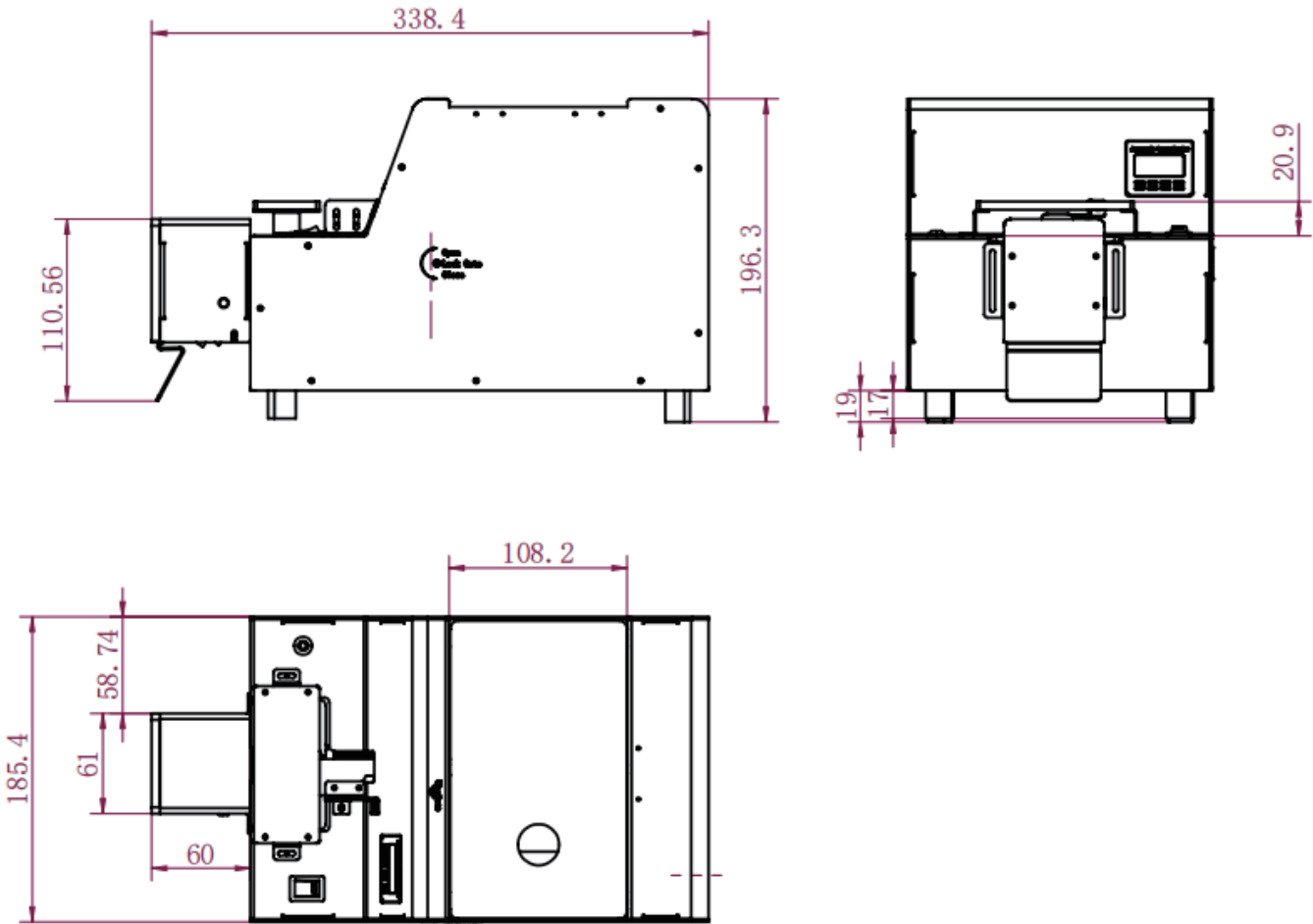
”

本机适用于多种规格范围内螺丝或类似螺丝的零件的点数包装，点数发货，定数打螺丝。可用于生产过程中对物料的权限管理，防止工人在锁附产品出现漏打多打螺丝或对物料的浪费现象，应用于自动流水线、螺丝打包、工位螺丝控制等领域。

This machine is suitable for a variety of specifications within the scope of screws or similar screws in the parts of the points of packaging, points of delivery, fixed number of screws. Can be used in the production process of the material rights management, to prevent workers in the lock attached to the product appears to miss playing more screws or waste of material phenomenon, applied to the automatic assembly line, screw packing, workplace screw control and other fields.

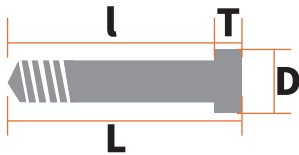
产品尺寸

Product Size



螺钉适用范围

Scope of application of screws



适用螺钉类型 Applicable screw type	螺杆直径d Screw Diameter	螺杆长度l Screw length l (mm)	螺帽直径D Nut diameter D (mm)	螺帽厚度T Nut thickness (T)	螺钉材质 Screw Material
标准螺钉 Standard screws	M3-M6	≤30	3≤D≤12	≥0.5	铁质/无磁 Ferrous/non-magnetic
组合螺钉 Combination screw	M3-M6	≤30	3.2≤D≤12	≥1	铁质/无磁 Ferrous/non-magnetic
非标螺钉 Non-standard screws	M3-M6	≤32	3≤D≤14	≥0.2	铁质/无磁 Ferrous/non-magnetic

■ 非标螺钉均为定制，需以实物评估吹送可行性
Non-standard screws are all customized, and the feasibility of blowing needs to be evaluated in kind.

”

增值功能（选配）

Value-added features (optional)

1.长短钉检测 / 废料筛选 ----- 适用于螺钉规格接近或对螺钉公差要求严格的应用场合

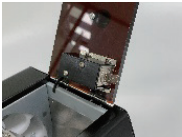
Short and long nails inspection / Waste screening---Suitable for applications where screws are close in specification or where tight screw tolerances are required.

对螺丝长短检测混料或错放料，自动筛选，有效防止，提高产品合格率。
The length of the screws to detect the mixing of materials or misplaced materials, automatic screening, effective prevention, improve product qualification rate.

2.扫码开盖 ----- 有效防止员工混料，出现少钉或多钉现象，权限管控精确数据

Scan the code to open the lid---Effectively prevent employees from mixing materials, the phenomenon of under-nailing or over-nailing, the authority to control the precise data.

加入电磁锁，对加料上盖锁密，防止产线员工误操作，权限操作扫码或特殊
Add electromagnetic lock, to add material on the cover of the lock, to prevent the production line staff misuse, authority to operate the code or special decryption to open the cover.



3.真空吸清洁 ----- 满足 3C 电子行业对清洁度的高要求，无尘供料，保障送料过程的可靠性

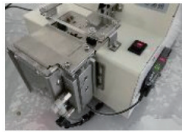
Vacuum cleaning--- Meet the high cleanliness requirements of the 3C electronics industry, dust-free feeding, guaranteeing the reliability of the feeding process.

真空吸附 + 真空过滤器双重清洁，减少碎屑对产品本身的污染
Vacuum adsorption + vacuum filter double cleaning, reduce the debris on the product itself.

4.计数管控 - ----- 有效防止 生产过程中可能潜在的问题，精准管控对象

Counting Control - ----- Prevent potential problems in the production process and precisely control the targets.

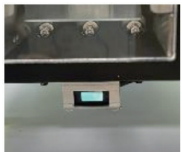
料盒锁定，可以准确控制出料数量，防止 员工在操作过程中出现少钉或多钉现象
Box lock, can accurately control the amount of material, to prevent the staff in the process of operation of under-nailing or over-nailing phenomenon.



5.感应自动送料 ----- 提高了流水线生产效益，精确且快速

Sensorised Automatic Feeding ----- Improves assembly line productivity, accuracy and speed.

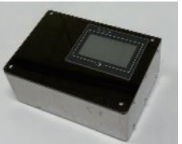
采用漫反射红外感应器，可以感应到接料盒的取放自动启动送钉，无需人工操作启动
Adopting diffuse infrared sensor, it can sense the pick and place of the receiving box and start to feed the nails automatically, no need for manual operation to start.



6.脉冲 /485 外接通讯 ----- 可远程 PLC 通讯操控螺丝机工作状态，智能管控

Pulse /485 external communication---Remote PLC communication to control the working status of the screw machine, intelligent control.

通过脉冲 /485 模块可以远程发送指令，对供料器启停、完成、缺料信号的控制，也可一
对多台控制
Through the pulse /485 module can be sent remotely to send commands to the feeder start-stop, completion, the lack of material signal control, can also be a pair of multiple control.



7.缺料 / 满料检测 ----- 配备缺料，满料感应器，可实时监测生产状态，有效管理

Out-of-feed / full-feed detection---Equipped with out-of-feed and full-feed sensors, it can monitor the production status in real time for effective management.

通过感应器检测料仓内物料的缺料，满料状态，同时发出报警信号，方便及时进行处理
Detect the lack of material in the silo through the sensor, full of material state, and at the same time send out an alarm signal, convenient and timely processing.

8.气缸横拉式 ----- 可解决因转盘供料存在的不稳定因素出现的棱角卡料、变形等问题

Out-of-feed / full-feed detection---Equipped with out-of-feed and full-feed sensors, it can monitor the production status in real time for effective management.

采用气缸横拉分料，横向往复运动，运动平稳，重复定位精准，轨道与分料接口处增加
进料感应器，针对螺母、四方垫片螺丝或有棱角的物料等，可以有有效的解决转盘卡角问
题

Function: Adopt the cylinder to pull the material horizontally, transverse reciprocating motion, smooth movement, repeat the positioning accuracy, the track and the interface with the material to increase the feed sensor, for nuts, four-way spacer screws or angular materials, etc., can effectively solve the problem of the turntable jamming angle.



选型参数

Selection Parameters

型号 Model	外形尺 寸 Dimension L*W*H (mm)	重 量 Weight (Kg)	容 量 Capacity (CC)	输出速度 output speed (Pcs/min)	电 源 Power	过载保护 overload protection	长短检测 Long and short detection	PLC 通讯 PLC communication	锁定料盒 Locking cassette	漫反射感应 Diffuse reflectance	真空清洁 Vacuum cleaning	8421 点数 8421 points	扫码开盖 Scan the code to open the lid	特殊感应 special sense	横拉分料 Le pull across and divide the material	缺 / 满料检测 Out-of-feed/full-feed detection	废料筛选 Waste Screening
ES-7300-700ML	361 X 185 X 196	6.0	700	50 - 120	输入： AC 110V-220V 输出： DC15V/2A 功率： 30W	过载停转或反转， 保护马达与线路板， 恢复后正转动作	—	—	—	—	C	—	—	—	—	—	—
ES-7300-A-700ML		6.2					—	—	—	—	—	—	○	—	—	—	—
ES-7300-B-700ML		6.0					—	—	—	—	—	—	—	○	—	—	C
ES-7300-LE-700ML		6.2					—	—	—	—	—	—	—	—	○	—	—
ES-7300-JL-700ML		6.2					—	—	—	—	—	—	—	—	—	○	—
ES-7302-700ML		6.0					○	—	—	—	—	—	—	—	—	—	—
ES-7302-A-700ML		6.2					—	—	—	—	—	—	○	—	—	—	—
ES-7302-JL-700ML		6.2					—	—	—	—	—	—	—	—	—	○	—
ES-7302-TS-700ML		6.2					—	—	—	—	—	—	—	—	—	—	○
ES-7304-700ML		6.2					—	○	—	—	—	—	—	—	—	—	—
ES-7304-A-700ML		6.4					—	○	—	—	—	—	○	—	—	—	—
ES-7304-JL-700ML		6.3					—	○	—	—	—	—	—	—	—	○	—
ES-7305-700ML		6.2					—	○	—	—	—	—	—	—	—	—	—
ES-7305-A-700ML		6.3					—	○	—	—	—	—	○	—	—	—	○
ES-7305-JL-700ML		6.2					—	○	—	—	—	—	—	—	—	○	—
ES-7306-700ML		6.2					—	—	○	—	—	—	—	—	—	—	—
ES-7306-A-700ML		6.4					—	—	○	—	—	—	○	—	—	—	—
ES-7306-JL-700ML		6.4					—	—	○	—	—	—	—	—	—	○	—
ES-7307-700ML		6.0					—	—	—	○	—	—	—	—	—	—	—
ES-7307-A-700ML		6.2					—	—	—	○	—	—	○	—	—	—	—
ES-7307-JL-700ML		6.2					—	—	—	○	—	—	—	—	—	○	—
ES-7308-700ML		6.5					—	—	—	—	○	—	—	—	—	—	—
ES-7308-A-700ML		6.7					—	—	—	—	○	—	○	—	—	—	—
ES-7308-JL-700ML		6.6					—	—	—	—	○	—	—	—	—	○	—
ES-7309-700ML		6.2					—	—	—	—	—	○	—	—	—	—	—
ES-7309-A-700ML		6.4					—	—	—	—	—	○	○	—	—	—	—
ES-7309-JL-700ML		6.3					—	—	—	—	—	○	—	—	—	○	—

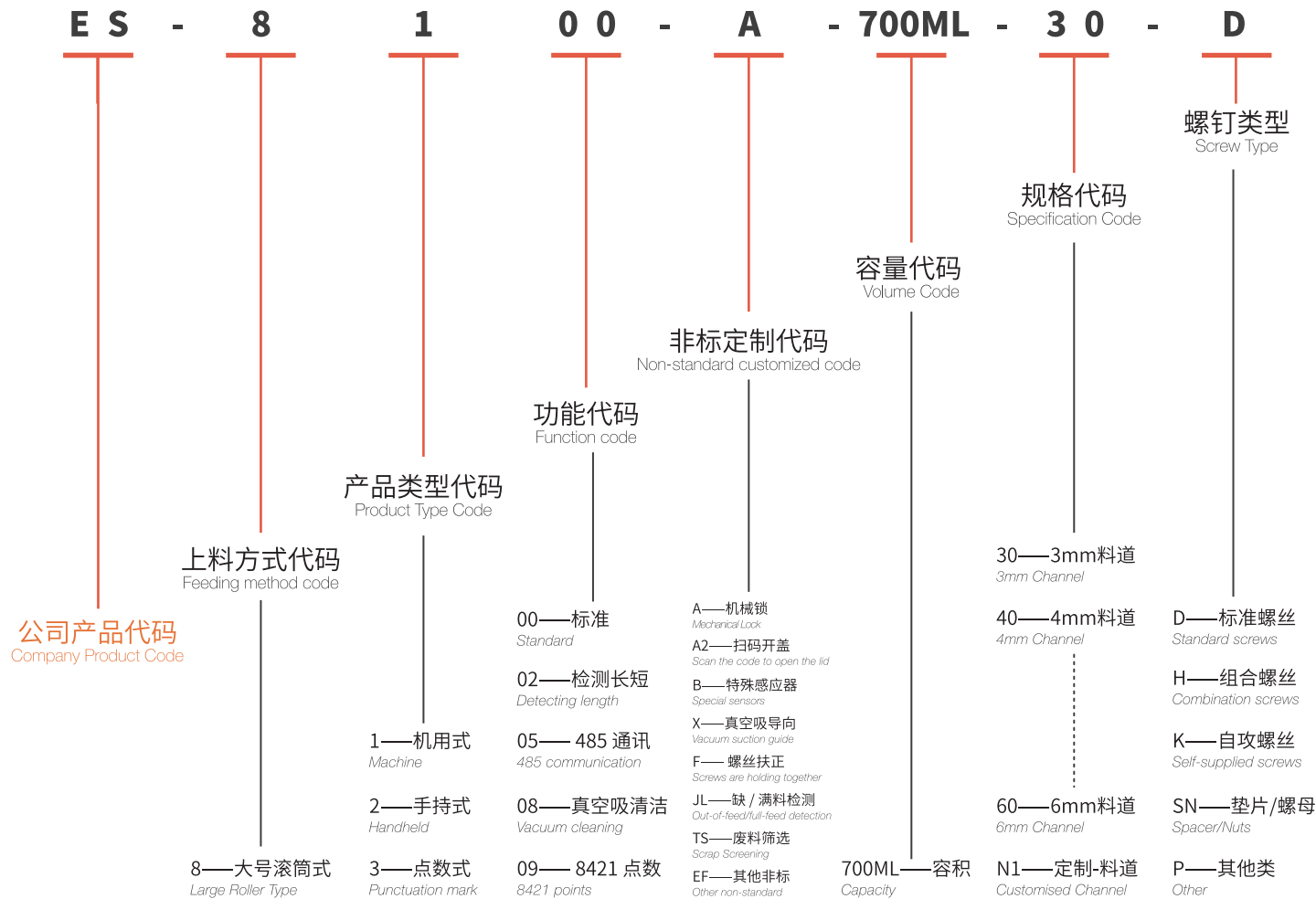
■ 规格及螺钉类型只体现在最终型号中
The type and screw type are only reflected in the final model.

送钉机 (8系)

Feeder(8 Series)

产品型号说明

Product Model Description



ES-8300

触屏版自动螺丝点数机

Touch screen version of
automatic screw counting machine

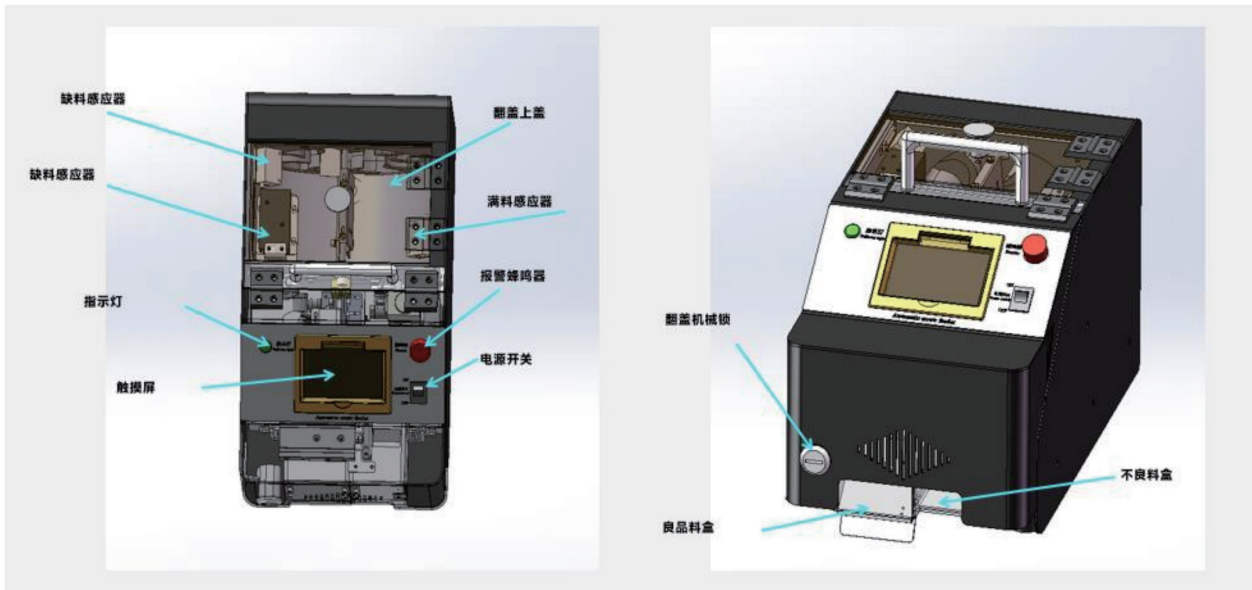
产品说明

Product Description

1. 本机采用 3.5 寸触摸屏，可同步实现多种数据控制显示控制
The machine adopts 3.5 inch touch screen, can synchronously achieve a variety of data control display control.
2. 料仓内置真空装置对物料进行清洁
In-built vacuum device in the silo to clean the material.
3. 可以对不同螺丝长度进行筛选，对射模拟量采集，判断准确
It is possible to screen different screw lengths and to shoot analogue acquisition with accurate judgement.
4. 料仓配置缺料及满料感应检测
Silos are equipped with out-of-feed and full-feed sensors.
5. 配备电磁锁固定上盖，可以进行扫码开盖设置
Equipped with a solenoid lock to secure the top cover, which can be set up for scanning code to open the cover.
6. 上下翻盖（带机械锁）
Upper and lower flap (with mechanical lock).
7. 同时配备良品料盒和不良料盒（区分合格螺丝不合格螺丝）
Equipped with both good and bad boxes (to distinguish between qualified screws and unqualified screws).

产品结构图

Product Structure Diagram



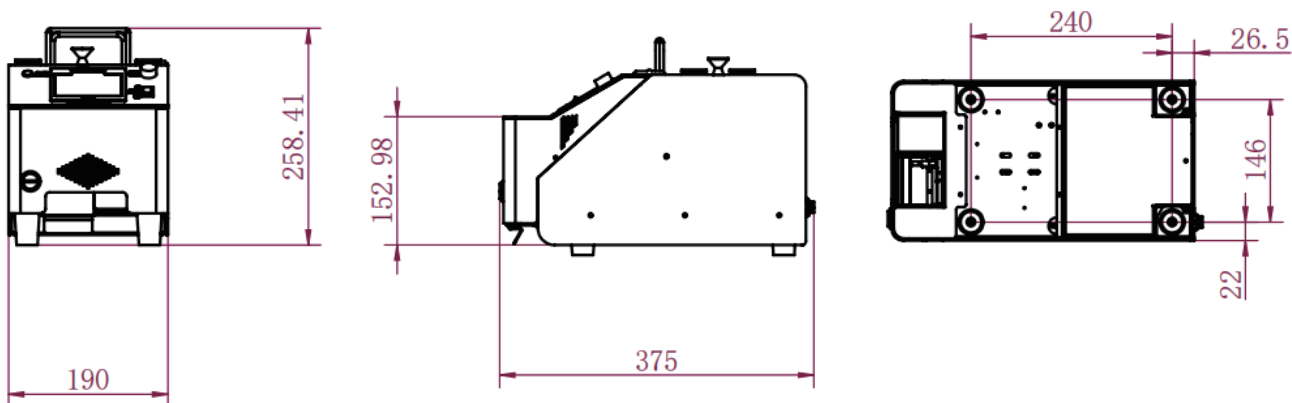
”

本机适用于多种规格范围内螺丝或类似螺丝的零件的点数包装，点数发货，定数打螺丝。可用于生产过程中对物料的权限管理，防止工人在锁附产品出现漏打多打螺丝或对物料的浪费现象，应用于自动流水线、螺丝打包、工位螺丝控制等领域。本机还可以对螺丝不同长度进行判别，同时对物料清洁，准确根据需求数量进行供料，实现更合理地物料管控。

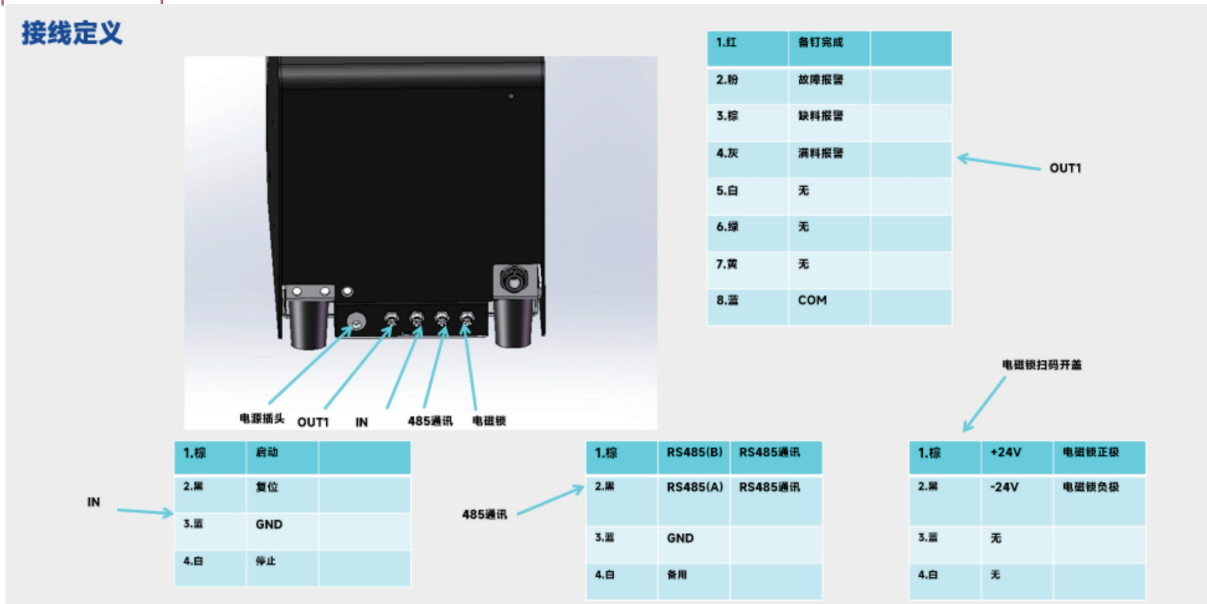
This machine is suitable for a variety of specifications within the scope of screws or similar screws in the parts of the points of packaging, points of delivery, fixed number of screws. Can be used in the production process of the material rights management, to prevent workers in the lock attached to the product appears to miss playing more screws or waste of material phenomenon, applied to the automatic assembly line, screws packing, workstation screw control and other fields. This machine can also be different lengths of screws to discriminate, while the material cleaning, accurate according to the number of demand for material supply, to achieve a more reasonable material control.

产品尺寸

Product Size



接线定义



产品参数

Product Parameter

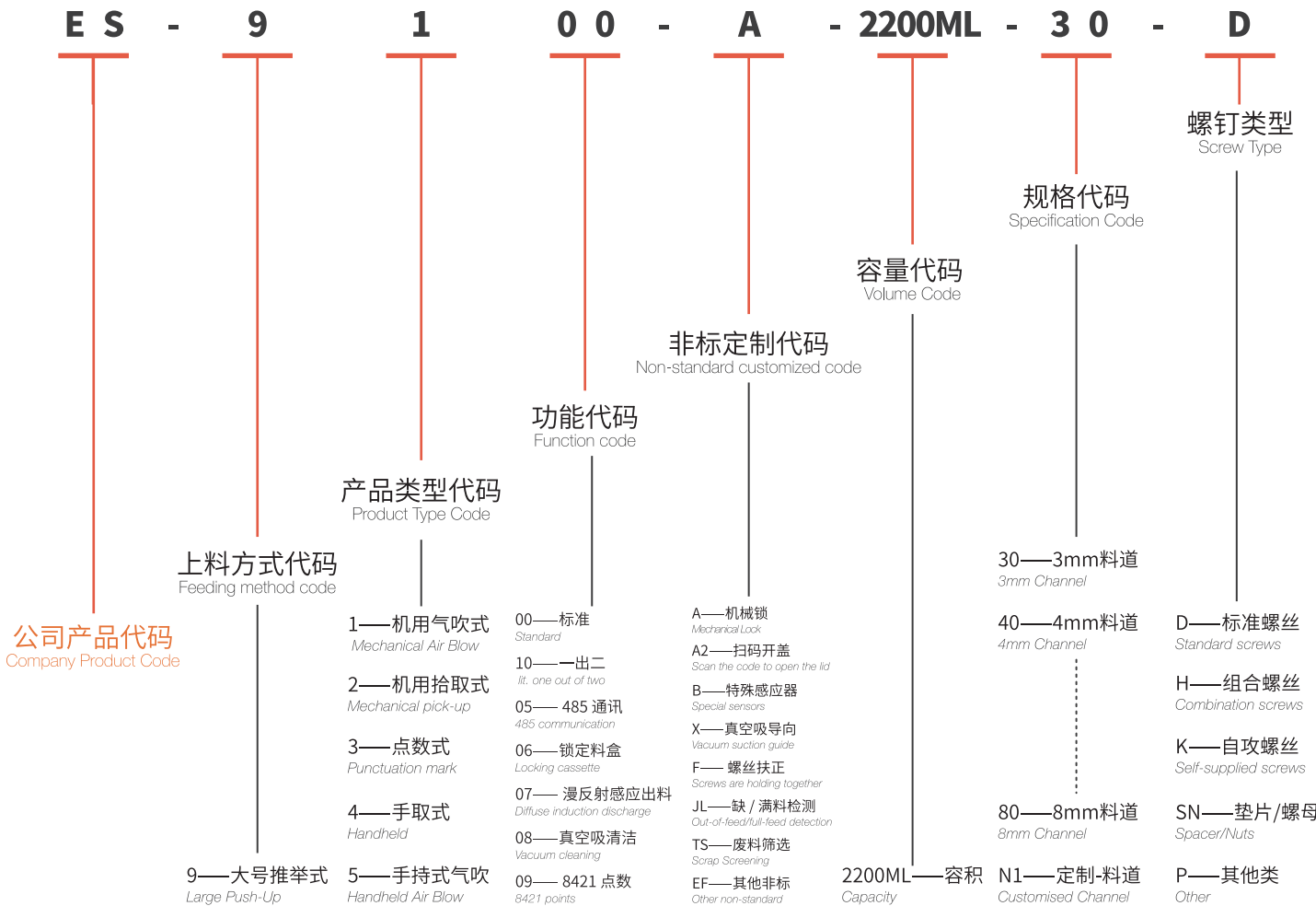
供料器型号 Feeder Models	ES-8300	分钉方式 Split Nail Method	转盘式 rotary
适合螺钉大小 Suitable screw size	M2~M6	分钉速度 Split Nail Speed	0.5S/颗 0.5s/pcs
适合螺钉长度 Suitable screw length	6~23mm	感应方式 Induction method	对射型感应器 Convective Sensor
料仓大小 Bin size	900CC	信号输出 Signal output	I/O和485通讯 I/O and 485 communication
检测精度范围 Detection accuracy range	±0.5	供料器外形 Feeder profile	375X190X258
适配器 Adapter	15V2A	取料方式 Pick-up method	手按压料盒 Hand-pressed cassettes

送钉机 (9系)

Feeder(9 Series)

产品型号说明

Product Model Description



产品类型

Product Type



1

机用吹送式螺丝供料机

Mechanical Blow-Feed Screw Feeder



2

机用拾取式螺丝供料机

Mechanical Pick-Up Screw Feeder



3

自动点数螺丝机

Automatic Pointing Screw Feeder



4

手取式螺丝供料机

Hand-held screw feeder

ES-9100

大推举式机用气吹螺丝机
Large Push-Up Type
Machine Air Blow Screwdriver

产品说明

Product Description

- 1.全自动供料/Fully automatic feeding
全自动送料系统,将螺丝吹送至夹嘴,直接锁附产品,操作简单,效率高。
Full-automatic feeding system, blowing the screws to the clamping nozzle, directly locking the attached products, easy to operate, high efficiency.

2.横拉式分料/Horizontal pull-out divider
螺丝分料通过气缸横拉分料,分料稳定,不卡料,分料速度快。
Screws are divided by the cylinder cross-pulling material, stable material distribution, no jamming, fast material distribution speed.

3.推举式上料/ Push-up loading
通过滑台气缸控制推块上下运动,送料稳定,对物料磨损小。
The up and down movement of the push block is controlled by the slide cylinder, which is stable in feeding and less abrasion to the material.

4.3.5 寸大触摸屏/3.5 inch large touch screen
3.5 寸电阻式大触摸屏,实时监控各个运动部件运动状态,大屏显示更清楚,参数调节更方便。
3.5 inch resistive large touch screen, real-time monitoring of the movement status of each moving part, large screen display is clearer, more convenient parameter adjustment.

5.供料效率可调节/Adjustable feeding efficiency
上料转盘速度及振动大小等参数直接在显示屏上调节,操作简单。
Parameters such as loading turntable speed and vibration size are directly adjusted on the display, easy to operate.

6.振动稳定/Vibration stabilisation
送料通过电磁振动,振幅小,频率可调,使得振动稳定,电磁振动寿命长。
The material is fed through electromagnetic vibration, with small amplitude and adjustable frequency, which makes the vibration stable and the electromagnetic vibration has a long life.

7.缺料报警功能/Out of material alarm function
当料仓发生缺料超时,供料器会自动报警提示。
The feeder will automatically alarm when there is a shortage of material in the bin.

8.大料仓,大容量/ Large silo, large capacity
料仓大,可针对大螺丝及长螺丝。
Large magazine for large and long screws.



本机可适用 M2-M8 范围内多种规格螺丝气吹式供料,螺丝机通过气缸控制推块上下推动,将螺丝推至轨道中,进行送料,气管直接将螺丝吹送至夹嘴,搭配机器人完成锁附,供料器自动完成送料系统,只需发送要料信号即可将料吹至夹嘴中,大料仓,容量大,可针对大螺丝及长螺丝。

This machine can be applied to a variety of specifications within the range of M2-M8 screw air blowing feeding, screw machine through the cylinder control push block up and down to push the screws to the track for feeding, the air pipe will blow the screws directly to the nozzle, with the robot to complete the locking attached to the feeder to automatically complete the feeding system, just send the signal to be material can be blown to the clamping nozzle, the large silo, the capacity of the large screws and screws can be for the large and long screws.

螺钉适用范围

Scope of application of screws

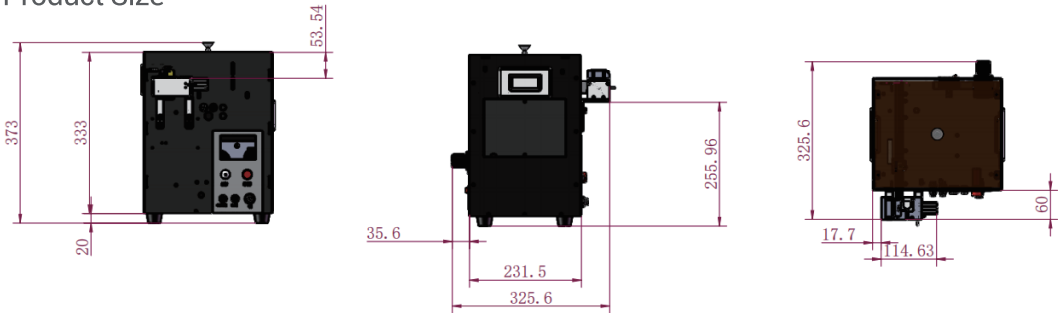


适用螺钉类型 Applicable screw type	螺钉范围 Screw range	螺钉总长L Total length of screws L (mm)	螺帽直径D Nut diameter D (mm)	长径比L/D Ratio (L/D)	螺钉材质 Screw Material	适用工况 Applicable working conditions
标准螺钉 Standard screws	M2-M8	≤35	4≤D≤12	≥1.5	铁质/无磁 Ferrous/non-magnetic	平孔/深孔或干涉 Flat hole/deep hole or interference height
组合螺钉 Combination screw	M2-M8	≤35	4≤D≤12	≥1.5	铁质/无磁 Ferrous/non-magnetic	平孔/深孔或干涉 Flat hole/deep hole or interference height
非标螺钉 Non-standard screws	≤M8	≤40	3≤D≤16	≥1.4	铁质/无磁 Ferrous/non-magnetic	平孔/深孔 Flat hole/deep hole or interference height

■ 非标螺钉均为定制,需以实物评估吹送可行性
Non-standard screws are all customized, and the feasibility of blowing needs to be evaluated in kind.

产品尺寸

Product Size



增值功能

Value-added features

1. 扫码开盖 ----- 有效防止员工混料, 出现少钉或多钉现象, 权限管控精确数据

Scan the code to open the lid---Effectively prevent employees from mixing materials, the phenomenon of under-nailing or over-nailing, the authority to control the precise data.

加入电磁锁, 对加料上盖锁密, 防止产线员工误操作, 权限操作扫码或特殊

Add electromagnetic lock, to add material on the cover of the lock, to prevent the production line staff misuse, authority to operate the code or special decryption to open the cover.

2. 真空吸清洁 ----- 满足 3C 电子行业对清洁度的高要求, 无尘供料, 保障送料过程的可靠性

Vacuum cleaning--- Meet the high cleanliness requirements of the 3C electronics industry, dust-free feeding, guaranteeing the reliability of the feeding process.

真空吸附 + 真空过滤器双重清洁, 减少碎屑对产品本身的污染

Vacuum adsorption + vacuum filter double cleaning, reduce the debris on the product itself.

3. 脉冲 /485 外接通讯 ----- 可远程 PLC 通讯操控螺丝机工作状态, 智能管控

Pulse /485 external communication---Remote PLC communication to control the working status of the screw machine, intelligent control.

通过脉冲 /485 模块可以远程发送指令, 对供料器启停、完成、缺料信号的控制, 也可一对多台控制

Through the pulse /485 module can be sent remotely to send commands to the feeder start-stop, completion, the lack of material signal control, can also be a pair of multiple control.

产品参数

Product Parameter

适用螺丝 Applicable screws	适合M2.0-M8.0螺丝, 包括带垫片螺丝 (螺杆最长L=40mm) Suitable for M2.0-M8.0 screws, including screws with spacers (screw length up to L=40mm)
输出速度 output speed	70-90 pcs/min
电源 power supply	输入: AC110V-220V Input: AC110V-220V
重量 weight	25kg (不含电批) 25kg (without electric batch)
尺寸 dimension	L329mm*W276mm*H396mm
附件 attachment	操作手册, 内六角扳手、直流电源 Operation Manual, Allen Wrench, DC Power Supply
容量 capacity	2200CC (M4.0*14可放3500颗) 2200CC (M4.0*14 can put 3500pcs)
工作气压 Working Air Pressure	0.5-0.8MPa
信号对接 signal matching	备料完成信号, 启动吹料信号, 报警信号 Material preparation complete signal, start blowing signal, alarm signal

ES-9200

大推举式机用横拉螺丝机

Large push-up type
machine cross-drawing screwdriver

产品说明

Product Description

1. 适用螺丝范围广 /Wide range of applicable screws

标准螺丝, 1:1 短螺丝、自攻螺丝、组合螺丝、铆钉、螺母等。

Standard screws, 1:1 short screws, self-tapping screws, combination screws, rivets, nuts, etc.

2. 转盘式分料 /Rotary type dividing material

螺丝分料通过气缸横拉分料, 分料稳定, 不卡料, 分料速度快。

Turntable type discharge, each discharge position is accurate, repeat positioning accuracy ± 0.1 , can better match the robot work.

3. 运转流畅 /Smooth running

螺丝在滚筒内运转, 未按正常方向进入轨道的螺丝, 都会掉到滚筒内, 进入下个循环, 无卡料现象。

The screws run inside the drum, and any screws that do not enter the track in the normal direction will fall into the drum and go to the next cycle without jamming.

4. 液晶显示计数 /LCD display countinging

通过数码显示面板可以设置不同参数, 调节方便, 参数直观。

Different parameters can be set through the digital display panel, easy to adjust and intuitive parameters.

5. 供料效率可调节 /Adjustable feeding efficiency

上料转盘速度及振动大小等参数直接在显示屏上调节, 操作简单。

Parameters such as loading turntable speed and vibration size are directly adjusted on the display, easy to operate.

6. 抗强光干扰 /Anti-glare interference

功能升级, 不受强光干扰, 在强光下依然能正常工作。

The induction function is upgraded, which is not disturbed by the glare and can still work normally in strong light.

7. 缺料报警功能 /Out of material alarm function

当料仓发生缺料超时, 供料器会自动报警提示。

The feeder will automatically alarm when there is a shortage of material in the bin.

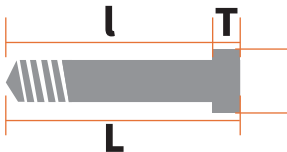
8. 过载保护 /Overload protection

全面升级控制主板, 对上料电机及分度盘步进电机, 出现卡料时, 系统自动控制电机反转一定时间, 有效保护电机和线路板。

A comprehensive upgrade of the control board, the loading motor and indexing plate stepping motor, the system automatically control the motor reverses a certain time when there is a material jam. Effective protection of motor and circuit board

螺钉适用范围

Scope of application of screws



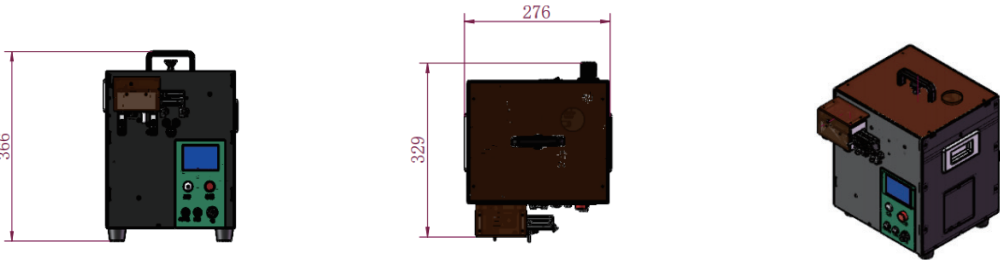
适用螺钉类型 Applicable screw type	螺杆直径d Screw Diameter	螺杆长度l Screw length l (mm)	螺帽直径D Nut diameter D (mm)	螺帽厚度T Nut thickness (T)	螺钉材质 Screw Material
标准螺钉 Standard screws	M3-M10	≤ 40	$3 \leq D \leq 16$	≥ 2	铁质/无磁 Ferrous/non-magnetic
组合螺钉 Combination screw	M3-M10	≤ 40	$3.2 \leq D \leq 16$	≥ 3	铁质/无磁 Ferrous/non-magnetic
非标螺钉 Non-standard screws	M3-M10	≤ 50	$3 \leq D \leq 20$	≥ 2	铁质/无磁 Ferrous/non-magnetic

■ 非标螺钉均为定制, 需以实物评估吹送可行性

Non-standard screws are all customized, and the feasibility of blowing needs to be evaluated in kind.

产品尺寸

Product Size



增值功能

Value-added features

1. 扫码开盖 ----- 有效防止员工混料, 出现少钉或多钉现象, 权限管控精确数据

Scan the code to open the lid---Effectively prevent employees from mixing materials, the phenomenon of under-nailing or over-nailing, the authority to control the precise data.

加入电磁锁, 对加料上盖锁密, 防止产线员工误操作, 权限操作扫码或特殊
Add electromagnetic lock, to add material on the cover of the lock, to prevent the production line staff misuse, authority to operate the code or special decryption to open the cover.

2. 真空吸清洁 ----- 满足 3C 电子行业对清洁度的高要求, 无尘供料, 保障送料过程的可靠性

Vacuum cleaning--- Meet the high cleanliness requirements of the 3C electronics industry, dust-free feeding, guaranteeing the reliability of the feeding process.

真空吸附 + 真空过滤器双重清洁, 减少碎屑对产品本身的污染
Vacuum adsorption + vacuum filter double cleaning, reduce the debris on the product itself.

3. 脉冲 /485 外接通讯 ----- 可远程 PLC 通讯操控螺丝机工作状态, 智能管控

Pulse /485 external communication---Remote PLC communication to control the working status of the screw machine, intelligent control.

通过脉冲 /485 模块可以远程发送指令, 对供料器启停、完成、缺料信号的控制, 也可一对多台控制
Through the pulse /485 module can be sent remotely to send commands to the feeder start-stop, completion, the lack of material signal control, can also be a pair of multiple control.

产品参数

Product Parameter

适用螺丝 Applicable screws	适合M3.0-M10螺丝, 包括带垫片螺丝 (螺杆最长L=40mm) Suitable for M3.0-M10 screws, including screws with spacers (screw length up to L=40mm)
输出速度 output speed	70-90 pcs/min
电源 power supply	输入: AC110V-220V Input: AC110V-220V
重量 weight	25kg (不含电批) 25kg (without electric batch)
尺寸 dimension	L329mm*W276mm*H396mm
附件 attachment	操作手册, 内六角扳手、直流电源 Operation Manual, Allen Wrench, DC Power Supply
容量 capacity	2200CC (M4.0*14可放3500颗) 2200CC (M4.0*14 can put 3500pcs)
工作气压 Working Air Pressure	0.5-0.8MPa
信号对接 signal matching	备料完成信号, 启动吹料信号, 报警信号 Material preparation complete signal, start blowing signal, alarm signal

ES-9300

大推举式螺丝点数机

Large Push-Up Screw Counting Machine

产品说明

Product Description

1. 多组点数控制 / Multi-group counting control
可以对物料进行 1-15 组不同数量的供料, 点数数量准确。
The material can be supplied in different quantities from 1-15 groups, and the number of countings is accurate.

2. 转盘式分料 / Rotary type dividing material
转盘式出料, 每次出料位置准确, 重复定位精度 ± 0.1 , 能够更好地搭配机械手工作。
Turntable type discharging, each discharging position is accurate, repeat positioning accuracy ± 0.1 , can better match the robot work.

3. 运转流畅 / Smooth running
螺丝在滚筒内运转, 未按正常方向进入轨道的螺丝, 都会掉到滚筒内, 进入下个循环, 无卡料现象。
The screws run inside the drum, and any screws that do not enter the track in the normal direction will fall into the drum and go to the next cycle without jamming.

4. 液晶显示计数 / LCD display countinging
通过数码显示面板可以设置不同参数, 调节方便, 参数直观。

Different parameters can be set through the digital display panel, easy to adjust and intuitive parameters.

5. 供料效率可调节 / Adjustable feeding efficiency
上料转盘速度及振动大小等参数直接在显示屏上调节, 操作简单。
Parameters such as loading turntable speed and vibration size are directly adjusted on the display, easy to operate.

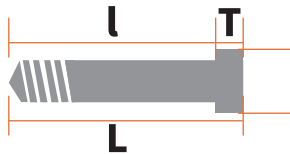
6. 抗强光干扰 / Anti-glare interference
功能升级, 不受强光干扰, 在强光下依然能正常工作。
The induction function is upgraded, which is not disturbed by the glare and can still work normally in strong light.

7. 缺料报警功能 / Out of material alarm function
当料仓发生缺料超时, 供料器会自动报警提示。
The feeder will automatically alarm when there is a shortage of material in the bin.

8. 过载保护 / Overload protection
全面升级控制主板, 对上料电机及分度盘步进电机, 出现卡料时, 系统自动控制电机反转一定时间, 有效保护电机和线路板。
A comprehensive upgrade of the control board, the loading motor and indexing plate stepping motor, the system automatically control the motor reverses a certain time when there is a material jam. Effective protection of motor and circuit board

螺钉适用范围

Scope of application of screws

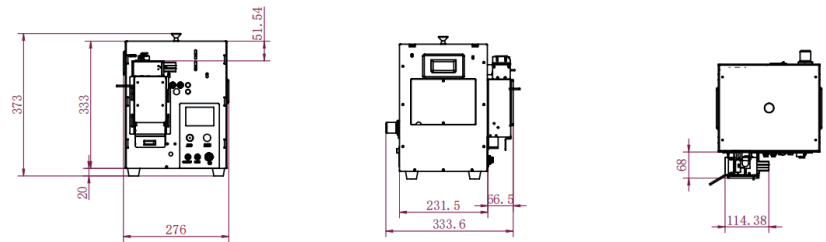


适用螺钉类型 Applicable screw type	螺杆直径 d Screw Diameter	螺杆长度 l Screw length l (mm)	螺帽直径 D Nut diameter D (mm)	螺帽厚度 T Nut thickness (T)	螺钉材质 Screw Material
标准螺钉 Standard screws	M3-M10	≤ 40	$3 \leq D \leq 16$	≥ 2	铁质/无磁 Ferrous/non-magnetic
组合螺钉 Combination screw	M3-M10	≤ 40	$3.2 \leq D \leq 16$	≥ 3	铁质/无磁 Ferrous/non-magnetic
非标螺钉 Non-standard screws	M3-M10	≤ 50	$3 \leq D \leq 20$	≥ 2	铁质/无磁 Ferrous/non-magnetic

■ 非标螺钉均为定制, 需以实物评估吹送可行性
Non-standard screws are all customized, and the feasibility of blowing needs to be evaluated in kind.

产品尺寸

Product Size



增值功能

Value-added features

1. 扫码开盖 ----- 有效防止员工混料, 出现少钉或多钉现象, 权限管控精确数据

Scan the code to open the lid---Effectively prevent employees from mixing materials, the phenomenon of under-nailing or over-nailing, the authority to control the precise data.

加入电磁锁, 对加料上盖锁密, 防止产线员工误操作, 权限操作扫码或特殊

Add electromagnetic lock, to add material on the cover of the lock, to prevent the production line staff misuse, authority to operate the code or special decryption to open the cover.

2. 真空吸清洁 ----- 满足 3C 电子行业对清洁度的高要求, 无尘供料, 保障送料过程的可靠性

Vacuum cleaning--- Meet the high cleanliness requirements of the 3C electronics industry, dust-free feeding, guaranteeing the reliability of the feeding process.

真空吸附 + 真空过滤器双重清洁, 减少碎屑对产品本身的污染

Vacuum adsorption + vacuum filter double cleaning, reduce the debris on the product itself.

3. 脉冲 /485 外接通讯 ----- 可远程 PLC 通讯操控螺丝机工作状态, 智能管控

Pulse /485 external communication---Remote PLC communication to control the working status of the screw machine, intelligent control.

通过脉冲 /485 模块可以远程发送指令, 对供料器启停、完成、缺料信号的控制, 也可一对多台控制

Through the pulse /485 module can be sent remotely to send commands to the feeder start-stop, completion, the lack of material signal control, can also be a pair of multiple control.

产品参数

Product Parameter

适用螺丝 Applicable screws	适合M3.0-M10螺丝, 包括带垫片螺丝 (螺杆最长L=40mm) Suitable for M3.0-M10 screws, including screws with spacers (screw length up to L=40mm)
输出速度 output speed	70-90 pcs/min
电源 power supply	输入: AC110V-220V Input: AC110V-220V
重量 weight	25kg (不含电批) 25kg (without electric batch)
尺寸 dimension	L329mm*W276mm*H396mm
附件 attachment	操作手册, 内六角扳手、直流电源 Operation Manual, Allen Wrench, DC Power Supply
容量 capacity	2200CC (M4.0*14可放3500颗) 2200CC (M4.0*14 can put 3500pcs)
工作气压 Working Air Pressure	0.5-0.8MPa
信号对接 signal matching	备料完成信号, 启动吹料信号, 报警信号 Material preparation complete signal, start blowing signal, alarm signal

ES-9400

大推举式手取螺丝机

Large Push-Up
Hand Screwdriver

产品说明

Product Description

1. 适用螺丝范围广 /Wide range of applicable screws

标准螺丝, 1:1 短螺丝、自攻螺丝、组合螺丝、铆钉、螺母等。

Standard screws, 1:1 short screws, self-tapping screws, combination screws, rivets, nuts, etc.

2. 转盘式分料 /Rotary type dividing material

螺丝分料通过气缸横拉分料, 分料稳定, 不卡料, 分料速度快。

Turntable type discharge, each discharge position is accurate, repeat positioning accuracy ± 0.1 , can better match the robot work.

3. 运转流畅 /Smooth running

螺丝在滚筒内运转, 未按正常方向进入轨道的螺丝, 都会掉到滚筒内, 进入下个循环, 无卡料现象。

The screws run inside the drum, and any screws that do not enter the track in the normal direction will fall into the drum and go to the next cycle without jamming.

4. 液晶显示计数 /LCD display countinging

通过数码显示面板可以设置不同参数, 调节方便, 参数直观。

Different parameters can be set through the digital display panel, easy to adjust and intuitive parameters.

5. 供料效率可调节 /Adjustable feeding efficiency

上料转盘速度及振动大小等参数直接在显示屏上调节, 操作简单。

Parameters such as loading turntable speed and vibration size are directly adjusted on the display, easy to operate.

6. 抗强光干扰 /Anti-glare interference

功能升级, 不受强光干扰, 在强光下依然能正常工作。

The induction function is upgraded, which is not disturbed by the glare and can still work normally in strong light.

7. 缺料报警功能 /Out of material alarm function

当料仓发生缺料超时, 供料器会自动报警提示。

The feeder will automatically alarm when there is a shortage of material in the bin.

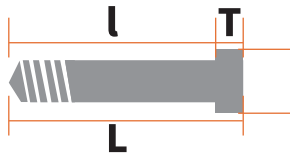
8. 过载保护 /Overload protection

全面升级控制主板, 对上料电机及分度盘步进电机, 出现卡料时, 系统自动控制电机反转一定时间, 有效保护电机和线路板。

A comprehensive upgrade of the control board, the loading motor and indexing plate stepping motor, the system automatically control the motor reverses a certain time when there is a material jam. Effective protection of motor and circuit board

螺钉适用范围

Scope of application of screws

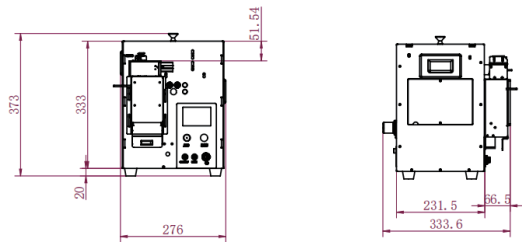


适用螺钉类型 Applicable screw type	螺杆直径d Screw Diameter	螺杆长度l Screw length l (mm)	螺帽直径D Nut diameter D (mm)	螺帽厚度T Nut thickness (T)	螺钉材质 Screw Material
标准螺钉 Standard screws	M3-M10	≤40	3≤D≤16	≥2	铁质/无磁 Ferrous/non-magnetic
组合螺钉 Combination screw	M3-M10	≤40	3.2≤D≤16	≥3	铁质/无磁 Ferrous/non-magnetic
非标螺钉 Non-standard screws	M3-M10	≤50	3≤D≤20	≥2	铁质/无磁 Ferrous/non-magnetic

■ 非标螺钉均为定制, 需以实物评估吹送可行性
Non-standard screws are all customized, and the feasibility of blowing needs to be evaluated in kind.

产品尺寸

Product Size



增值功能

Value-added features

- 1.扫码开盖 ----- 有效防止员工混料,出现少钉或多钉现象,权限管控精确数据**
Scan the code to open the lid---Effectively prevent employees from mixing materials, the phenomenon of under-nailing or over-nailing, the authority to control the precise data.

加入电磁锁,对加料上盖锁密,防止产线员工误操作,权限操作扫码或特殊
Add electromagnetic lock, to add material on the cover of the lock, to prevent the production line staff misuse, authority to operate the code or special decryption to open the cover.
- 2.真空吸清洁 ----- 满足 3C 电子行业对清洁度的高要求,无尘供料,保障送料过程的可靠性**
Vacuum cleaning--- Meet the high cleanliness requirements of the 3C electronics industry, dust-free feeding, guaranteeing the reliability of the feeding process.

真空吸附 + 真空过滤器双重清洁,减少碎屑对产品本身的污染
Vacuum adsorption + vacuum filter double cleaning, reduce the debris on the product itself.
- 3.脉冲 /485 外接通讯 ----- 可远程 PLC 通讯操控螺丝机工作状态,智能管控**
Pulse /485 external communication---Remote PLC communication to control the working status of the screw machine, intelligent control.

通过脉冲 /485 模块可以远程发送指令,对供料器启停、完成、缺料信号的控制,也可一对多台控制
Through the pulse /485 module can be sent remotely to send commands to the feeder start-stop, completion, the lack of material signal control, can also be a pair of multiple control.

产品参数

Product Parameter

适用螺丝 Applicable screws	适合M3.0-M10螺丝,包括带垫片螺丝(螺杆最长L=40mm) Suitable for M3.0-M10 screws, including screws with spacers (screw length up to L=40mm)
输出速度 output speed	70-90 pcs/min
电源 power supply	输入:AC110V-220V Input: AC110V-220V
重量 weight	25kg(不含电批) 25kg (without electric batch)
尺寸 dimension	L329mm*W276mm*H396mm
附件 attachment	操作手册,内六角扳手、直流电源 Operation Manual, Allen Wrench, DC Power Supply
容量 capacity	2200CC(M4.0*14可放3500颗) 2200CC(M4.0*14 can put 3500pcs)
工作气压 Working Air Pressure	0.5-0.8MPa
信号对接 signal matching	备料完成信号,启动吹料信号,报警信号 Material preparation complete signal, start blowing signal, alarm signal

TES-1050G/L

补料仓

Rechargeable bin

螺丝自动加料器

Rechargeable bin for
Automatic Screw Feeder

产品说明

Product Description

- 1.配合自动螺丝供给机或者其他型号供给机使用;**
Cooperate with automatic screw supply machine or other types of supply machine.

2.可适用 M2-M5 多种规格螺丝;
Can be applied to M2-M5 a variety of screw specifications.

3.补料器自带感应器,如自动螺丝供给机料仓缺料,加料仓会自动向螺丝供给机料仓加料;
Replenisher with its own sensor, such as automatic screw supply machine bin shortage of material, adding material bin will automatically add material to the screw supply machine bin.

4.加料时间可调。
Adjustable feeding time.

”

本机是搭配于螺丝送料机的自动加料器,操作简单。

This machine is an automatic feeder for screw feeders, and is easy to operate.

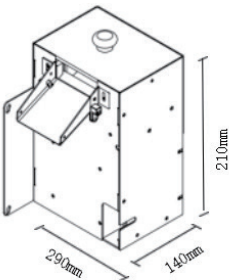
产品参数

Product Parameter

机种 Types of machine	TES-1050G
电源 Power supply	DC12V1A
尺寸 Dimension (mm)	290mm (L) × 140mm (W) × 210mm (H)
重量 Weight (Kg)	约3Kg About 3Kg
附带配件 Accessories	电源适配器 DC powersupply

产品尺寸

Product Size



锁付组件

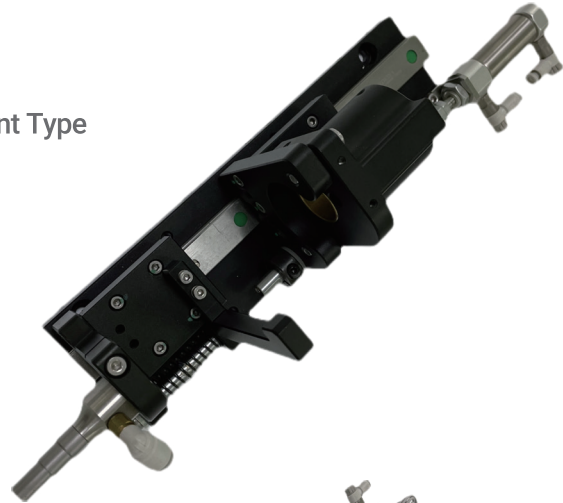
Locking Components

产品名称	吸取式锁付组件
产品型号	SN4-A
批刀类型	外六角螺母/螺丝通用
适用电批	电动（客供/标配；建议智能电批）
吸钉管避让长度（选项）	50/100/150mm
产品信息	尺寸（长宽高）460*74*122mm（30mm避让）
	重量（电批另计）2.3kg
	输入电压DC24V(电批另计)
	输入气压0.5-0.7Mpa
	对接气管规格Φ6mm
	检测功能（选项）位移感应器（模拟量）
	配置气缸单/双气缸
交互信号	配置器件(负压吸)负压表,负压发生器,感应器,过滤器
	配置器件(磁吸)感应器
	输入点数3
	输出点数3/5

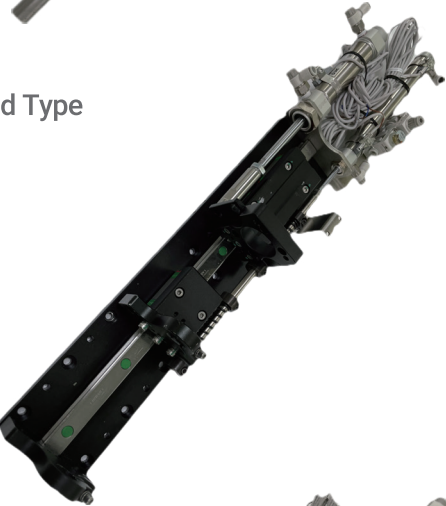
产品名称	吹气式锁付组件
产品型号	SNC-B
夹头类型	标准吹送锁付夹头
适用电批	电动（客供/标配；建议智能电批）
吸钉管避让长度（选项）	15/30/50mm
产品信息	尺寸（长宽高）530*74*122mm（30mm避让）
	重量（电批另计）2.7kg
	输入电压DC24V(电批另计)
	输入气压0.5-0.7Mpa
	对接气管规格Φ6mm
	检测功能（选项）位移感应器（模拟量）
	配置气缸单/双气缸
交互信号	配置器件感应器
	备品批刀5Pcs
	输入点数3
	输出点数3/5

产品名称	吹吸一体式螺丝锁付组件
产品型号	SN4-C
夹头类型	标准吹吸一体夹头
适用电批	电动（客供/标配；建议智能电批）
吸钉管避让长度（选项）	50/100/150mm
产品信息	尺寸（长宽高）610*74*122mm(50mm避让)
	重量（电批另计）3.5kg（轻量化另行定制）
	输入电压DC24V(电批另计)
	输入气压0.5-0.7Mpa
	对接气管规格Φ6mm
	检测功能（选项）位移感应器（模拟量）
	配置气缸SMC双气缸
交互信号	配置器件负压表,负压发生器,感应器,过滤器
	备品批刀5Pcs, 吸嘴2Pcs
	输入点数3
	输出点数7

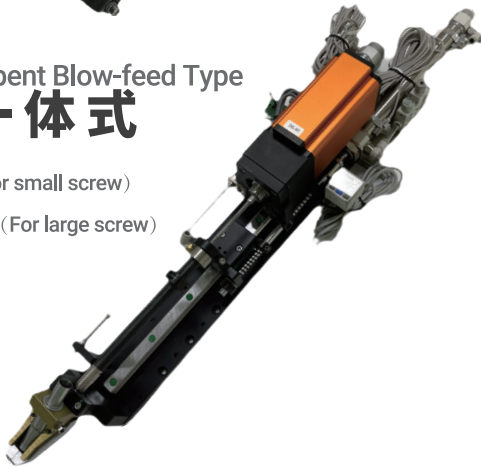
Absorbent Type 吸取式 SN4-A



Blow-feed Type 吹送式 SN4-B



Absorbent Blow-feed Type 吹吸一体式 SN4-C (For small screw) EM4-CF (For large screw)



产品名称
Product Name
手持小扭力智能电批系列
Handheld Small Torque Smart Electric Batch Series

产品型号
Product Model
DP-HS-001 DP-HS-002
DP-HL-001 DP-HL-001
DP-HXL-001 DP-HXL-003
DP-HXL-004

产品特点
Product Features

- 高精度扭力控制, 扭力精度达到 $\pm 3\%$ — $\pm 5\%$
High precision torque control, torque accuracy of $\pm 3\%$ — $\pm 5\%$.
- 锁付结果可追溯、可导出、可上传MES系统
The locking result can be traced, exported and uploaded to MES system.
- 采用高端进口马达, 产品寿命长, 免维护
Adopting high-end imported motor, with long product life and maintenance-free.
- 16种拧紧任务, 每种任务支持5个拧紧步骤, 拆螺丝任务支持2个拆卸步骤, 保证拧紧拆卸工艺高可控性
16 kinds of tightening tasks, each task supports 5 tightening steps. Screw removal task supports 2 removal steps to ensure high controllability of tightening and removal process.
- 精确的浮高/滑牙检测, 有OK、NG状态指示灯和蜂鸣器提示, 快速辨别异常
Precise floating height/slip tooth detection, with OK and NG status indicators and buzzer prompts to quickly identify abnormalities.
- 支持RS232/485 Modbus RTU通信协议, 扩展性强, 支持多路IO输入/输出, 可非标定制TCP/IP网口, 可快速构建智能锁付系统
Support RS232/485 Modbus RTU communication protocol, strong scalability, support multiple IO input/output. Can be non-standard custom TCP/IP network port, can quickly build intelligent lock payment system.
- 机箱小巧, 便于携带和安装, 调试简易, 提供二次开发的接口和技术支持
Compact chassis, easy to carry and install, easy debugging, provide secondary development interface and technical support.



手持式型号 Model	适用扭力 Applicable torque	速度Speed (rpm)	重量Weight (kg)	扭力精度 Torque accuracy	电压Voltage(v)
DP-HS-001	0.1-0.8(kgf.cm)	自动模式Automatic mode:30-1200	0.35	$\pm 5\%$	AC:220V
	10-80(mN.m)	高速模式High speed mode:30-1800			
DP-HS-002	0.1-0.8(kgf.cm)	自动模式Automatic mode:30-1200	0.25	$\pm 5\%$	AC:220V
	10-80(mN.m)	高速模式High speed mode:30-1800			
DP-HL-001	0.3-2.0(kgf.cm)	自动模式Automatic mode:30-1200	0.35	$\pm 5\%$	AC:220V
	30-200(mN.m)	高速模式High speed mode:30-1800			
DP-HL-002	0.3-2.0(kgf.cm)	自动模式Automatic mode:30-1200	0.25	$\pm 5\%$	AC:220V
	30-200(mN.m)	高速模式High speed mode:30-1800			
DP-HXL-001	1.5-8.0(kgf.cm)	自动模式Automatic mode:30-1200	0.45	$\pm 5\%$	AC:220V
	150-800(mN.m)	高速模式High speed mode:30-1800			
DP-HXL-003	3.0-13.0(kgf.cm)	自动模式Automatic mode:30-2000	0.65	$\pm 5\%$	AC:220V
	300-1300(mN.m)	高速模式High speed mode:30-2000			
DP-HXL-004	7.0-28.0(kgf.cm)	自动模式Automatic mode:30-1000	0.65	$\pm 5\%$	AC:220V
	700-2800(mN.m)	高速模式High speed mode:30-1000			

产品名称
Product Name

手持大扭力智能电批系列
Handheld High Torque Smart Batch Series

产品型号
Product Model

DP-HDXL-001 DP-HDXL-002
DP-HDXL-003 DP-HDXL-004

产品特点
Product Features



- 1.高精度扭力控制, 扭力精度达到±3%—±5%
High precision torque control, torque accuracy of ±3%~±5%.
- 2.锁付结果可追溯、可导出、可上传MES系统
The locking result can be traced, exported and uploaded to MES system.
- 3.采用高端进口马达, 产品寿命长, 免维护
Adopting high-end imported motor, with long product life and maintenance-free.
- 4.16种拧紧任务, 每种任务支持5个拧紧步骤, 拆螺丝任务支持2个拆卸步骤, 保证拧紧拆卸工艺高可控性
16 kinds of tightening tasks, each task supports 5 tightening steps. Screw removal task supports 2 removal steps to ensure high controllability of tightening and removal process.
- 5.精确的浮高/滑牙检测, 有OK、NG状态指示灯和蜂鸣器提示, 快速辨别异常
Precise floating height/slip tooth detection, with OK and NG status indicators and buzzer prompts to quickly identify abnormalities.
- 6.支持RS232/485 Modbus RTU通信协议, 扩展性强, 支持多路IO输入/输出, 可非标定制TCP/IP网口, 可快速构建智能锁付系统
Support RS232/485 Modbus RTU communication protocol, strong scalability, support multiple IO input/output. Can be non-standard custom TCP/IP network port, can quickly build intelligent lock payment system.
- 7.机箱小巧, 便于携带和安装, 调试简易, 提供二次开发的接口和技术支持
Compact chassis, easy to carry and install, easy debugging, provide secondary development interface and technical support.

手持式型号 Model	适用扭力 Applicable torque	速度Speed (rpm)	重量 Weight (kg)	扭力精度 Torque accuracy	电压Voltage (v)
DP-HDXL-001	6.0-56.0(kgf.cm)	自动模式Automatic mode:30-800	0.9	±5%	AC:220
	600-5600(mN.m)	高速模式High speed mode:30-800			
DP-HDXL-002	10.0-80.0(kgf.cm)	自动模式Automatic mode:30-600	0.9	±5%	AC:220
	1000-8000(mN.m)	高速模式High speed mode:30-600			
DP-HDXL-003	40.0-150.0(kgf.cm)	自动模式Automatic mode:30-300	0.9	±5%	AC:220
	4000-15000(mN.m)	高速模式High speed mode:30-300			
DP-HDXL-004	5.0-28.0(kgf.cm)	自动模式Automatic mode:30-1800	0.9	±5%	AC:220
	500-2800(mN.m)	高速模式High speed mode:30-1800			

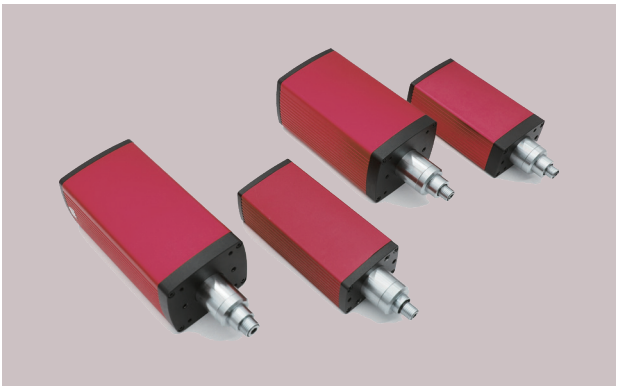
产品名称
Product Name

机用伺服电批系列
Machine servo electric batch series

产品型号
Product Model

SF-YS-500 SF-YS-900
SF-YS-1800 SF-YS-3600

产品特点
Product Features

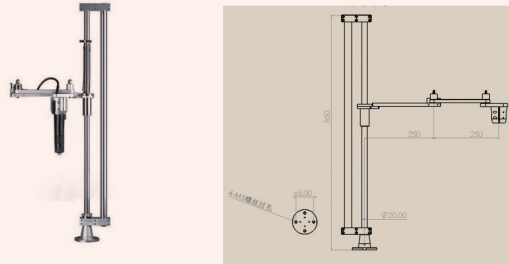
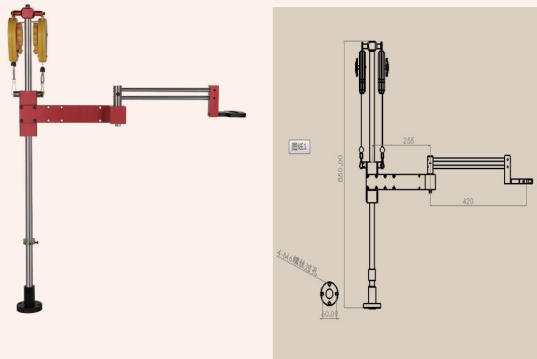
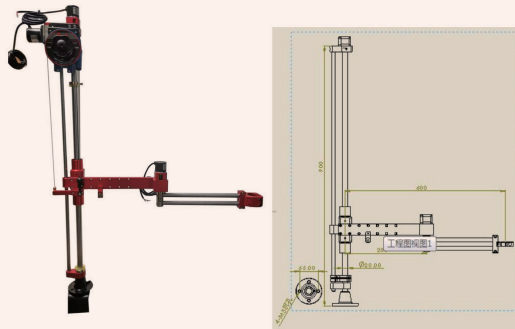

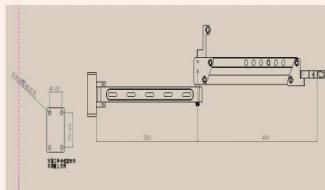


- 1.高精度：±3%-5%
High precision: ±3%-5%.
- 2.高速速度：30-3000rpm不等
High speed: ranging from 30-3000rpm.
- 3.高寿命：3年
High lifespan: 3 years.
- 4.高性价比：综合性能与价格合理
High cost performance: comprehensive performance and reasonable price.
- 5.支持主流控制系统：恒控、亚斌、云途、太控、帆称
Support mainstream control systems: Hengkong, Yabin, Yuntu, Taikong, Fancheng.
- 6.支持多段精细锁付：按不同工艺阶段切换不同的转速
Support multi-stage fine locking: switch different speeds according to different process stages.
- 7.支持异常报警：有浮高、滑牙报警
Support abnormal alarm: There are alarms for floating height and sliding teeth.
- 8.支持拧紧反馈：有数据记录和IO信号反馈
Support tightening feedback: There are data records and IO signal feedback.

机用式型号 Machine model	适用扭力 Torque (kgf.cm)	转速 Speed (rpm)	减速比 Reduction ratio	扭力精度 Torque accuracy	电压 Voltage (v)
SF-YS-500 (50W伺服电批) 50W Servo electric batch	0.3- 5.0	30- 3000	无	±5%	DC: 48V 功率Power350W
SF-YS-900 (100W伺服电批) 100W Servo electric batch	1.0- 9.0	30- 3000	无	±5%	DC:48V 功率Power:350W
SF-YS-1800 (200W伺服电批) 200W Servo electric batch	3.0- 18.0	30- 2000	无	±5%	DC:48V 功率Power:600W
SF-YS-3600 (400W伺服电批) 400W Servo electric batch	10.0- 36.0	30- 2000	无	±5%	DC48V 功率Power:600W AC: 220V 500W变压器+整流桥 500W transformer + rectifier bridge

悬臂架

Cantilever frame

						
型号 model number	EZ-100-A (普通型normal type)	EZ-100-B (普通型normal type)	EZ-100-C	EZ-100-CF (含定位传感器 Includes positioning sensors)	EZ-100-E (大扭力型High torque type)	EZ-100-EF (含定位传感器 Includes positioning sensors)
总体高度 Overall height	850mm	850mm	950mm		600mm	
升降行程 Lifting Stroke	500mm	500mm	600mm		500mm	
工作半径 working radius	80mm~500mm	80mm~650mm	80mm~700mm		150mm~800mm	
最大抗扭 Maximum torsion	横向 (Horizontal) 25Nm 垂直 (Vertical) 60Nm	横向 (Horizontal) 30Nm 垂直 (Vertical) 60Nm	横向 (Horizontal) 25Nm 垂直 (Vertical) 80Nm		横向 (Horizontal) 60Nm 垂直 (Vertical) 100Nm	
最大载重 Maximum load	3KG	5KG	5KG		8KG	
夹头适用范围 Range of applica- tion of collets	30-50 (定制customisation)	28-50 (定制customisation)	28-50 (定制customisation)		30-60 (定制customisation)	
配置定位系统 Configuration of the positioning system	——	——	——	✓	——	✓

Attachments




附件

Vacuum Sleeve Nozzle



Screw bits

披头

种类 Type	示意 Sketch	驱动尺寸 Drive size	驱动类型 Drive type	长度 Length (mm)	规格 Specification	应用范围 Application
梅花 TX		1/4" E6.3	六角形 hexagon 半月形 half moon shape	50-300	TX8,TX10,TX15,TX20,TX25 TX30,TX40	梅花螺钉 TX Screw
内六角 HEX		3/8" E9.5			HEX2,2.5,3,4,5,6,8,10	内六角螺钉 HEX Screw
十字 PH		1/2" E12.7			PH0,PH1,PH2,PH3	十字螺钉 PH Screw
